

**Verzeichnis
des zur Liquidation gelangenden Armeematerials
25. April 2007
Logistik-Center Thun-Schwäbis**

**Liste
du matériel d'armée mis en liquidation
25 avril 2007
Centre Logistique Thoune-Schwäbis**

**Elenco
del materiale dell'esercito da liquidare
25 aprile 2007
Centro Logistico Thun-Schwäbis**

**List of
army surplus goods and vehicles on sale
April 25, 2007
Logistics Center Thun-Schwäbis**

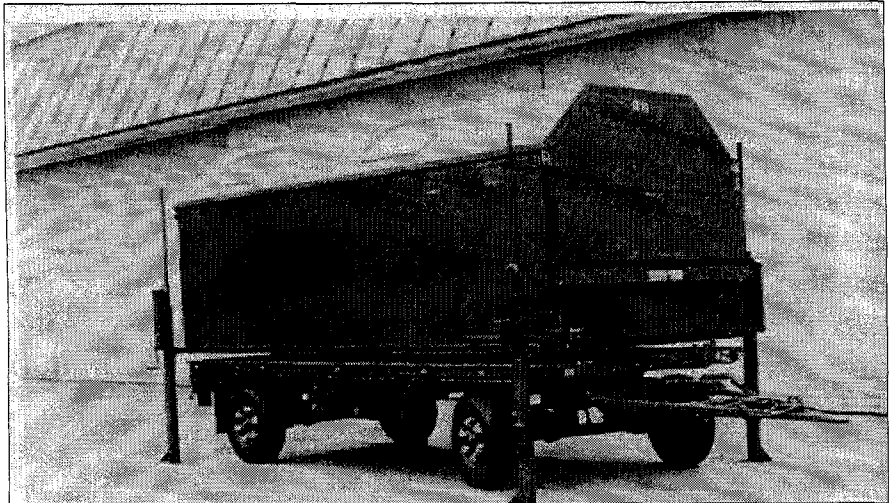
| | | |
|-------------------------------------|--------------------|--------|
| Besichtigung der Fahrzeuge | ab | Uhr |
| Les véhicules peuvent être examinés | dès | heures |
| Ispezione veicoli | dalle 06.30 | |
| Inspection of the vehicles | from | a.m. |
| Materialverkauf | ab | Uhr |
| Vente de matériel | dès | heures |
| Vendita di materiale | dalle 06.30 | |
| Sale of army goods | from | a.m. |
| Versteigerung von Fahrzeugen | ab | Uhr |
| Vente aux enchères de véhicules | dès | heures |
| Vendita all'asta dei veicoli | dalle 07.00 | |
| Auction of surplus vehicles | from | a.m. |

Änderungen bleiben vorbehalten
Sous réserve de modifications
Salvo cambiamenti
Subject to modifications

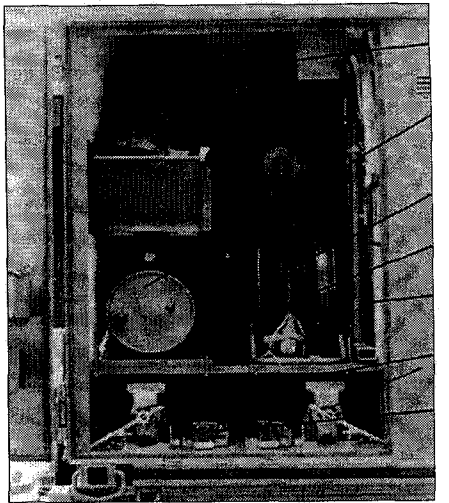
Preis (inkl. MWST)
Prix (TVA incl.)
Prezzo (IVA incl.)
Selling price (VAT incl.)

Fr. 5.—

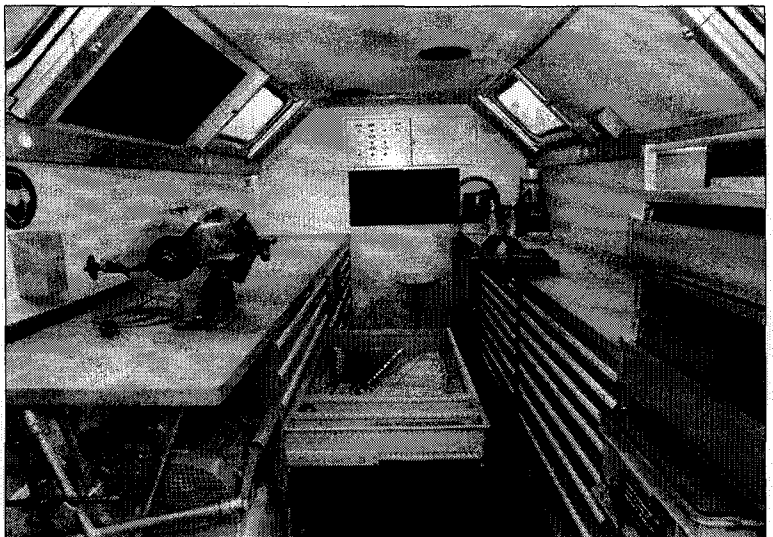
Werkstattanhänger - Remorque atelier



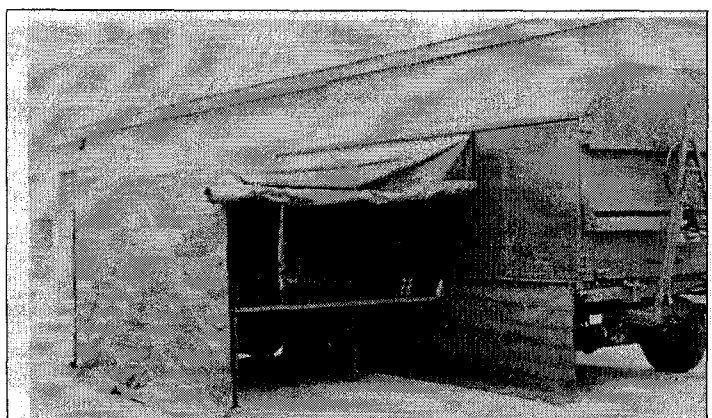
Anhänger 85 mit Kastenaufbau Lauf-Nr. 467, 473, 478, 595, 600, 605
remorque 85 avec caisse



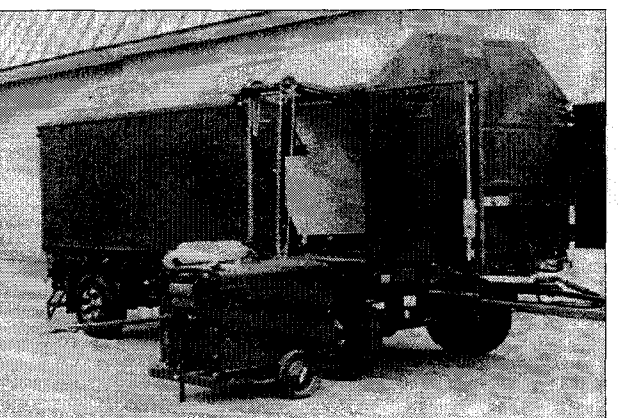
Diverses Zubehör
accessoires divers



Innenausstattung
équipement intérieur



Vorzelt mit Werkbänken
auvent avec établis



Notstromaggregat 6 KVA
génératrice de secours

Diverse Personenwagen an „Hauptversteigerung“ (Rampe)

Divers automobiles dans la „vente aux enchères“ (rampe)



Nr. 231
Peugeot 607 2.2 HDI Luxe
Jg. 2003, Km 186705
grau, Autom., Klima.



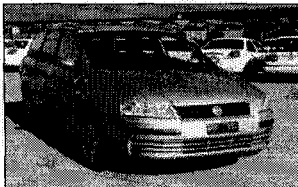
Nr. 233
BMW 525i
Jg. 2002, Km 157'838
beige/met, Klima., DISTRONIC



Nr. 235
Opel Vectra 1.8 16V Avant
Jg. 2001, Km 201212
grau/met., Autom, Klima.



Nr. 237
VW Passat 2,3 V5 Trend
Jg. 2001, Km 185'038
grau/met, Aut., Klima.



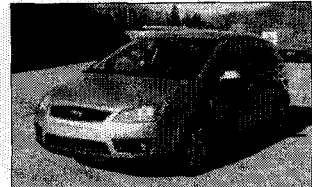
Nr. 232
Fiat Stilo MW 1.9 JTD Activ
Jg. 2003, Km 72'112
grau/met, Klima.



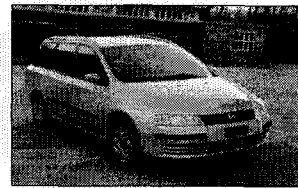
Nr. 234
Opel Frontera 2.2 DTI Lim.
Jg. 2003, Km 90190
schwarz/met, Klima.



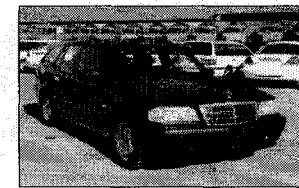
Nr. 238
Audi A4 Avant 2.5 TDI Quattro Jg. 03, Km 204'982
schwarz/met Autm., Klima.



Nr. 240
Ford FocusC-Max 2.0TDCi
Jg. 2004, Km 90'050
grau/met, Klima., Leder



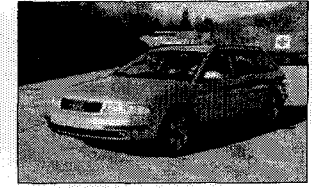
Nr. 236
Fiat Stilo MW JTD Active
Jg. 2003, Km 57790
blau/met, Klima.



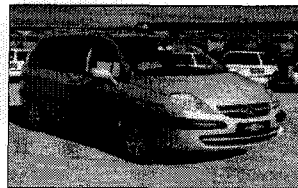
Nr. 239
Mercedes-Benz C 250 TD
Jg. 1999, Km 71'234
schwarz/met, Autom, Klima.



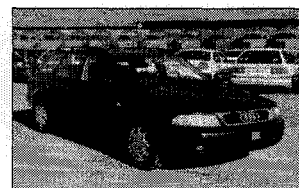
Nr. 281
Volvo S60 2.4
Jg. 2001, Km 179555
gelb/met., Klima.



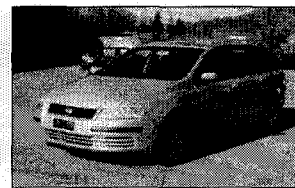
Nr. 283
Audi A4 Avant 2.4
Jg. 00, Km 243129, grau/met,
Autom, Klima, Leder



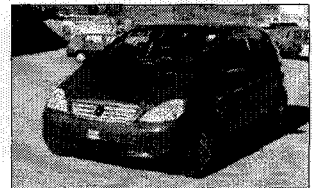
Nr. 282
Citroen C8 2.0 16VHDI X
Jg. 2004, Km 111'187
grau/met, Klima.



Nr. 284
Audi A4 Avant 2.5 TDI
Jg. 2000, Km 184'224
blau/met, Autom., Klima.



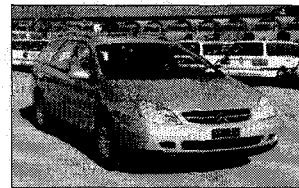
Nr. 285
Fiat Stilo MW 1.9 JTD Activ
Jg. 2003, Km 74'937
grün/met, Klima.



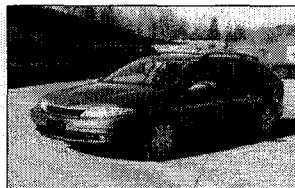
Nr. 287
Mercedes-Benz A 170 CDI
Jg. 2001, Km 159'455
rot/met, Autom. Klima. N.GPS



Nr. 286
Citroen, C5 2.0i 16V Excl A
Jg. 2003, Km 107818
blau, Autom., Klima.



Nr. 288
Citroen, C5 2.2 HDi Excl A
Jg. 2003, Km 129823
grau/met, Autom., Klima.



Nr. 289
Renault Laguna 2.2dCi Ex
Jg. 2003, Km 113379
grau/met., Klima.



Nr. 290
Peugeot 806 2.0 St HDI
Jg. 2001, Km 186'051
grau, Klima.

Hauptversteigerung (Rampe) Vente aux enchères (rampe) Messa all'asta principale (rampa)
 Beginn / commencement / incominica alle ore 07.00 h

| Nr. | Fz-Nr. | Fz-Art | Marke | Jg | Zyl. | Schätzung | Verkaufspreis | Fz-Zustand/Bemerkungen |
|-----|----------|----------------|--------|-------|------|------------------|-------------------|----------------------------|
| No | No-vhc. | Genre du vhc | Marque | Année | Cyl | Somme d'estimat. | Prix de vente | Etat du vhc/remarques |
| No | No-veic. | Genere di veic | Marca | anno | Cil | Stima | Prezzo di vendita | Stato di veic/osservazioni |

| | | | | | | | | | |
|----|----|-------|-------------------|---------------------|----|---|----------|---|----------------|
| 1 | M+ | 2141 | Pw/voit/autovett | VW Passat 1800 | 94 | 4 | 500... | F | Kombi |
| 2 | M+ | 24069 | Pw/voit/autovett | Ford Mondeo 2,0 | 98 | 4 | 500... | F | Limousine |
| 3 | M+ | 13494 | Pw/voit/autovett | VW Passat 1800 | 96 | 4 | 500... | V | Kombi |
| 4 | M+ | 23563 | Pw/voit/autovett | VW Passat 1800 | 93 | 4 | 500... | V | Kombi |
| 5 | M+ | 5383 | Pw/voit/autovett | Opel Astra F 1,6i | 94 | 4 | 500... | V | Kombi |
| 6 | M+ | 21053 | Pw/voit/autovett | Ford Transit 120 | 94 | 4 | 800... | F | 9 PI |
| 7 | M+ | 9492 | Pw/voit/autovett | VW Typ 2 | 87 | 4 | 800... | F | Kombi 9 PI |
| 8 | M+ | 9614 | Pw/voit/autovett | VW Typ 2 | 88 | 4 | 800... | F | Kombi 6 PI |
| 9 | M+ | 13521 | Pw/voit/autovett | VW Passat 1800 | 96 | 4 | 500... | F | Kombi |
| 10 | M+ | 12517 | Pw/voit/autovett | VW Golf III 1400 | 93 | 4 | 500... | F | |
| 11 | M+ | 43757 | Lieferw/voit/livr | Pinzgauer 6x6 | 75 | 4 | 3'000... | F | Kasten/Sanw |
| 12 | M+ | 43829 | Lieferw/voit/livr | Pinzgauer 6x6 | 81 | 4 | 3'000... | F | Kasten/Sanw |
| 13 | M+ | 43862 | Lieferw/voit/livr | Pinzgauer 6x6 | 82 | 4 | 3'000... | F | Kasten/Sanw |
| 14 | M+ | 43942 | Lieferw/voit/livr | Pinzgauer 6x6 | 82 | 4 | 3'000... | F | Kasten/Sanw |
| 15 | M+ | 44045 | Lieferw/voit/livr | Pinzgauer 6x6 | 82 | 4 | 3'000... | F | Kasten/Sanw |
| 16 | M+ | 44060 | Lieferw/voit/livr | Pinzgauer 6x6 | 82 | 4 | 3'000... | F | Kasten/Sanw |
| 17 | M+ | 44069 | Lieferw/voit/livr | Pinzgauer 6x6 | 83 | 4 | 3'000... | F | Kasten/Sanw |
| 18 | M+ | 44072 | Lieferw/voit/livr | Pinzgauer 6x6 | 83 | 4 | 3'000... | F | Kasten/Sanw |
| 19 | M+ | 44074 | Lieferw/voit/livr | Pinzgauer 6x6 | 83 | 4 | 3'000... | F | Kasten/Sanw |
| 20 | M+ | 44076 | Lieferw/voit/livr | Pinzgauer 6x6 | 83 | 4 | 3'000... | F | Kasten/Sanw |
| 21 | M+ | 11875 | Pw/voit/autovett | Mercedes-Benz 220 E | 93 | 4 | 1'500... | F | |
| 22 | M+ | 23400 | Pw/voit/autovett | Opel Vectra A 2,0i | 94 | 4 | 400... | V | |
| 23 | M+ | 20437 | Pw/voit/autovett | VW Golf III 1400 | 94 | 4 | 500... | V | Kombi |
| 24 | M+ | 3779 | Pw/voit/autovett | VW Golf III 1400 | 92 | 4 | 500... | F | |
| 25 | M+ | 23920 | Pw/voit/autovett | Mercedes-Benz 200 E | 93 | 4 | 1'500... | F | |
| 26 | M+ | 13281 | Pw/voit/autovett | Opel Omega B 2,0i | 95 | 4 | 800... | F | |
| 27 | M+ | 2218 | Pw/voit/autovett | VW Passat 1800 | 90 | 4 | 500... | F | Kombi |
| 28 | M+ | 5093 | Pw/voit/autovett | Opel Astra F 1,6i | 94 | 4 | 500... | F | Kombi |
| 29 | M+ | 4398 | Pw/voit/autovett | Opel Omega A 2,0i | 93 | 4 | 300... | V | |
| 30 | M+ | 20320 | Pw/voit/autovett | VW Golf III 1400 | 94 | 4 | 500... | F | |
| 31 | M+ | 1583 | Pw/voit/autovett | Opel Omega A 2,0i | 92 | 4 | 300... | F | |
| 32 | M+ | 13489 | Pw/voit/autovett | VW Passat 1800 | 96 | 4 | 500... | F | Kombi |
| 33 | M+ | 20510 | Pw/voit/autovett | Opel Astra F 1,6i | 94 | 4 | 500... | F | Kombi |
| 34 | M+ | 23450 | Pw/voit/autovett | Opel Vectra A 2,0i | 94 | 4 | 400... | F | |
| 35 | M+ | 20354 | Pw/voit/autovett | VW Passat 1800 | 92 | 4 | 500... | F | Kombi |
| 36 | M+ | 5166 | Pw/voit/autovett | Opel Astra F 1,6i | 94 | 4 | 500... | F | Kombi |
| 37 | M+ | 13286 | Pw/voit/autovett | Opel Omega B 2,0i | 95 | 4 | 800... | V | |
| 38 | M+ | 2291 | Pw/voit/autovett | VW Passat 1800 | 90 | 4 | 500... | F | Kombi |
| 39 | M+ | 11612 | Pw/voit/autovett | VW Golf III 1400 | 93 | 4 | 500... | V | |
| 40 | M+ | 13319 | Pw/voit/autovett | Toyota Corolla 4 WD | 95 | 4 | 1'000... | F | Wagon |
| 41 | M+ | 23633 | Pw/voit/autovett | Opel Astra F 1,6i | 95 | 4 | 500... | V | Kombi |
| 42 | M+ | 10318 | Pw/voit/autovett | Opel Omega B 2,0i | 95 | 4 | 800... | V | |
| 43 | M+ | 24071 | Pw/voit/autovett | Ford Mondeo 2,0 | 98 | 4 | 500... | V | Limousine |
| 44 | M+ | 4625 | Pw/voit/autovett | Mercedes-Benz 230 E | 89 | 4 | 1'500... | F | |
| 45 | M+ | 20554 | Pw/voit/autovett | VW Golf III 1400 | 92 | 4 | 500... | F | |
| 46 | M+ | 13502 | Pw/voit/autovett | VW Passat 1800 | 96 | 4 | 500... | F | Kombi |
| 47 | M+ | 4452 | Pw/voit/autovett | VW Golf III 1400 | 94 | 4 | 500... | F | |
| 48 | M+ | 63212 | Pw/voit/autovett | Opel Omega B 2,0i | 94 | 4 | 800... | F | |
| 49 | M+ | 2048 | Pw/voit/autovett | Opel Omega A 2,0i | 92 | 4 | 300... | F | |
| 50 | M+ | 2560 | Pw/voit/autovett | VW Passat 1800 | 92 | 4 | 500... | F | Kombi |
| 51 | M+ | 5754 | Pw/voit/autovett | VW Typ 2 | 91 | 4 | 800... | V | Bürowagen 3 PI |
| 52 | M+ | 9696 | Pw/voit/autovett | VW Typ 2 | 88 | 4 | 800... | F | Kombi 6 PI |
| 53 | M+ | 20283 | Pw/voit/autovett | VW Typ 2 | 86 | 4 | 800... | V | Kombi 6 PI |

465 5500

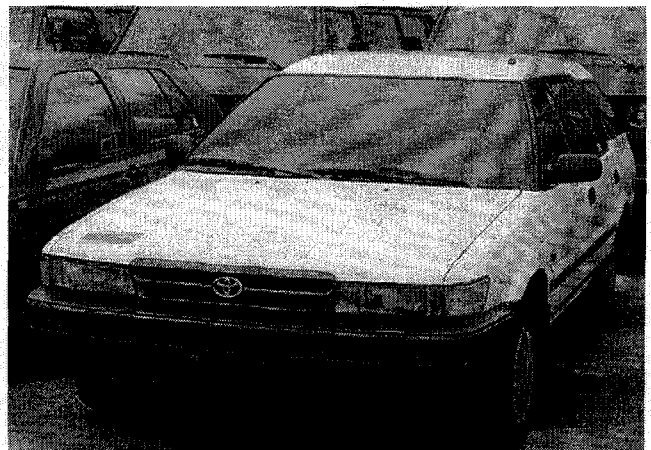
Hauptversteigerung (Rampe) Vente aux enchères (rampe) Messa all'asta principale (rampa)
 Beginn / commencement / incominica alle ore 07.00 h

| Nr. | Fz-Nr. | Fz-Art | Marke | Jg | Zyl. | Schätzung | Verkaufspreis | Fz-Zustand/Bemerkungen |
|-----|----------|----------------|--------|-------|------|------------------|-------------------|----------------------------|
| No | No-vhc. | Genre du vhc | Marque | Année | Cyl | Somme d'estimat. | Prix de vente | Etat du vhc/remarques |
| No | No-veic. | Genere di veic | Marca | anno | Cil | Stima | Prezzo di vendita | Stato di veic/osservazioni |

| | | | | | | | | | |
|----|----|-------|-------------------|----------------------|----|---|----------|---|-----------------------------|
| 54 | M+ | 5753 | Pw/voit/autovett | VW Typ 2 | 91 | 4 | 800.-- | F | Kombi 9 PI |
| 55 | M+ | 28133 | Arbeitsmaschine | VW Typ 2 | 87 | 4 | 800.-- | F | Einsatzfahrzeug 6 PI |
| 56 | M+ | 28108 | Lieferw/voit/livr | VW T4 | 92 | 4 | 1'500.-- | F | Kasten 2PI |
| 57 | M+ | 9664 | Pw/voit/autovett | VW Typ 2 | 88 | 4 | 800.-- | F | Kombi 9 PI |
| 58 | M+ | 28167 | Pw/voit/autovett | VW Typ 2 Syncro | 91 | 4 | 1'000.-- | F | 6 PI/Brücke u. Anhängervorr |
| 59 | M+ | 23235 | Pw/voit/autovett | VW Typ 2 | 90 | 4 | 800.-- | F | Kombi 9 PI |
| 60 | M+ | 1554 | Pw/voit/autovett | VW Typ 2 Syncro | 85 | 4 | 1'000.-- | F | Kombi 9 PI |
| 61 | M+ | 9418 | Pw/voit/autovett | VW Typ 2 | 87 | 4 | 800.-- | F | Kombi 6 PI |
| 62 | M+ | 5996 | Pw/voit/autovett | VW Typ 2 | 91 | 4 | 800.-- | F | Kombi 9 PI |
| 63 | M+ | 9769 | Lieferw/voit/livr | VW Typ 2 | 88 | 4 | 800.-- | V | Kasten 3 PI |
| 64 | M+ | 1557 | Pw/voit/autovett | VW Typ 2 Syncro 1500 | 85 | 4 | 1'000.-- | V | Kombi 9 PI |
| 65 | M+ | 9674 | Pw/voit/autovett | VW Typ 2 | 88 | 4 | 800.-- | F | Kombi 9 PI |
| 66 | M+ | 8846 | Pw/voit/autovett | VW Typ 2 | 89 | 4 | 800.-- | F | Kombi 9 PI |
| 67 | M+ | 8849 | Pw/voit/autovett | VW Typ 2 | 89 | 4 | 800.-- | F | Kombi 9 PI |
| 68 | M+ | 9545 | Pw/voit/autovett | VW Typ 2 | 89 | 4 | 800.-- | V | Kombi 9 PI |
| 69 | M+ | 9131 | Pw/voit/autovett | VW Typ 2 | 85 | 4 | 800.-- | F | Kombi 6 PI |
| 70 | M+ | 1559 | Pw/voit/autovett | VW Typ 2 Syncro | 85 | 4 | 1'000.-- | V | Kombi 9 PI |
| 71 | M+ | 38777 | Lieferw/voit/livr | Pinzgauer 6x6 | 76 | 4 | 3'000.-- | F | Kasten |
| 72 | M+ | 80890 | Lieferw/voit/livr | Pinzgauer 6x6 | 73 | 4 | 3'000.-- | F | Kasten |
| 73 | M+ | 80939 | Lieferw/voit/livr | Pinzgauer 6x6 | 73 | 4 | 3'000.-- | F | Kasten |
| 74 | M+ | 80877 | Lieferw/voit/livr | Pinzgauer 6x6 | 73 | 4 | 3'000.-- | F | Kasten |
| 75 | M+ | 43522 | Lieferw/voit/livr | Pinzgauer 6x6 | 75 | 4 | 3'000.-- | F | Kasten/Sanw |
| 76 | M+ | 43933 | Lieferw/voit/livr | Pinzgauer 6x6 1500 | 82 | 4 | 3'000.-- | F | Kasten/Sanw |
| 77 | M+ | 43506 | Lieferw/voit/livr | Pinzgauer 6x6 | 75 | 4 | 2'000.-- | A | Kasten/Sanw |
| 78 | M+ | 43532 | Lieferw/voit/livr | Pinzgauer 6x6 | 75 | 4 | 3'000.-- | F | Kasten/Sanw |
| 79 | M+ | 43509 | Lieferw/voit/livr | Pinzgauer 6x6 | 75 | 4 | 3'000.-- | F | Kasten/Sanw |
| 80 | M+ | 43851 | Lieferw/voit/livr | Pinzgauer 6x6 | 82 | 4 | 3'000.-- | F | Kasten/Sanw |
| 81 | M+ | 17219 | Lieferw/voit/livr | Puch 230 GE | 93 | 4 | 5'000.-- | V | 8 PI |
| 82 | M+ | 17227 | Lieferw/voit/livr | Puch 230 GE | 93 | 4 | 5'000.-- | V | 8 PI |
| 83 | M+ | 17246 | Lieferw/voit/livr | Puch 230 GE | 89 | 4 | 5'000.-- | V | 8 PI |
| 84 | M+ | 17290 | Lieferw/voit/livr | Puch 230 GE | 89 | 4 | 5'000.-- | V | 8 PI |
| 85 | M+ | 17434 | Lieferw/voit/livr | Puch 230 GE | 89 | 4 | 5'000.-- | V | 8 PI |
| 86 | M+ | 17440 | Lieferw/voit/livr | Puch 230 GE | 93 | 4 | 5'000.-- | V | 8 PI |



Lauf-Nr. 25



Lauf-Nr. 40

Hauptversteigerung (Rampe) Vente aux enchères (rampe) Messa all'asta principale (rampa)
 Beginn / commencement / incominica alle ore 07.00 h

| Nr. | Fz-Nr. | Fz-Art | Marke | Jg | Zyl. | Schätzung | Verkaufspreis | Fz-Zustand/Bemerkungen |
|-----|----------|----------------|--------|-------|------|------------------|-------------------|----------------------------|
| No | No-veh. | Genre du veh | Marque | Année | Cyl | Somme d'estimat. | Prix de vente | Etat du veh/remarques |
| No | No-veic. | Genere di veic | Marca | anno | Cil | Stima | Prezzo di vendita | Stato di veic/osservazioni |

| | | | | | | | | | | |
|-----|-----|--------|-------------------|--------------------------|----|---|----------|-------|---|-----------------------------|
| 87 | M+ | 17444 | Lieferw/voit/livr | Puch 230 GE | 93 | 4 | 5'000.-- | 9400 | V | 8 PI |
| 88 | M+ | 17452 | Lieferw/voit/livr | Puch 230 GE | 89 | 4 | 5'000.-- | 5300 | V | 8 PI |
| 89 | M+ | 17595 | Lieferw/voit/livr | Puch 230 GE | 93 | 4 | 5'000.-- | 0600 | V | 8 PI |
| 90 | M+ | 17792 | Lieferw/voit/livr | Puch 230 GE | 89 | 4 | 5'000.-- | 8600 | V | 8 PI |
| 91 | M+ | 23345 | Arbeitskarren | Esslingen DG 1.5/2 | 66 | 4 | 1'000.-- | | F | 1t/Gabelstapler |
| 92 | GRD | 3123 | Motorhandwagen | Ameise EJE KMS-B 16 G | 82 | E | 200.-- | | F | Deichselstapler |
| 93 | M+ | 23131 | Arbeitskarren | Still-Essl EFG 1.2/1005 | 73 | E | 800.-- | | A | 1t/Gabelstapler |
| 94 | M | 231294 | Arbeitskarren | Ameise EFG 12,5 G | 73 | E | 300.-- | | F | 1,2t/Gabelstapler |
| 95 | M+ | 23976 | Arbeitskarren | SIG-Lifter EFL 1236 T | 72 | E | 800.-- | | F | 1t/Gabelstapler |
| 96 | GRD | 2558 | Arbeitskarren | Lansing Bagnall EFP 5/20 | 80 | E | 800.-- | | A | 2t/Gabelstapler |
| 97 | M+ | 20444 | Lieferw/voit/livr | Bucher GT 1200S | 81 | 4 | 2'000.-- | | F | Kippbrücke/ohne Zubehör |
| 98 | M+ | 28294 | Arbeitskarren | Wayne 866 | 78 | 4 | 500.-- | | A | Kehrmachine |
| 99 | M+ | 20172 | Arbeitskarren | SIG Lifter EFL 1236 T | 72 | E | 800.-- | | A | 1,2t/Gabelstapler |
| 100 | GRD | 4478 | Arbeitskarren | Still DFG 8/3318 | 77 | 4 | 1'000.-- | | F | 4t/Gabelstapler |
| 101 | M+ | 8106 | Pw/voit/autovett | VW Golf II 1300 | 88 | 4 | 300.-- | | F | |
| 102 | M+ | 4543 | Pw/voit/autovett | Opel Omega A 2,0i | 93 | 4 | 300.-- | | V | |
| 103 | M+ | 84352 | Pw/voit/autovett | VW Golf II 1300 | 90 | 4 | 300.-- | | F | |
| 104 | M+ | 2394 | Pw/voit/autovett | VW Passat 1800 | 94 | 4 | 300.-- | | A | Kombi |
| 105 | M+ | 8988 | Pw/voit/autovett | Opel Omega A 2,0i | 93 | 4 | 300.-- | | F | |
| 106 | M+ | 21045 | Pw/voit/autovett | Ford Transit 120 | 94 | 4 | 800.-- | | F | 9 PI |
| 107 | M+ | 36548 | Lieferw/voit/livr | Pinzgauer 4x4 | 73 | 4 | 4'000.-- | 12200 | F | mit Schneepflug |
| 108 | M+ | 21018 | Pw/voit/autovett | Ford Transit 120 | 94 | 4 | 800.-- | | F | 9 PI |
| 109 | GE | 13330 | Lieferw/voit/livr | VW T4 | 91 | 4 | 1'500.-- | | F | Kombi 9 PI |
| 110 | M+ | 44241 | Pw/voit/autovett | VW Typ 2 | 88 | 4 | 2'000.-- | | V | Ambulanz |
| 111 | M+ | 10901 | Lieferw/voit/livr | Mercedes-Benz 310 | 89 | 4 | 1'000.-- | | F | 0,99t/Kasten |
| 112 | M+ | 23217 | Lieferw/voit/livr | Mercedes-Benz 310 4x4 | 90 | 4 | 1'000.-- | | K | Kasten (Frontschaden) |
| 113 | BS | 2066 | Lastw/cam/autoc | Iveco Turbo Daily | 90 | 4 | 2'000.-- | | F | 2t/Brücke/Verdeck/Hebebühne |
| 114 | M+ | 21016 | Pw/voit/autovett | Ford Transit 120 | 94 | 4 | 800.-- | | F | 9 PI |
| 115 | M+ | 49537 | Lieferw/voit/livr | Renault Trafic 4x4 | 90 | 4 | 2'000.-- | | F | 1t/Kasten |
| 116 | M+ | 20403 | Lieferw/voit/livr | VW LT-35 | 91 | 4 | 1'000.-- | | F | 1,5t/Kasten |
| 117 | M+ | 47738 | Lastw/cam/autoc | Unimog S 404 | 69 | 6 | 1'000.-- | | F | Wartungswagen |
| 118 | M+ | 20642 | Arbeitsmaschine | GMC K 3500 | 79 | 8 | 2'000.-- | | V | Löschwagen L79 |
| 119 | M+ | 20445 | Lieferw/voit/livr | Ford Transit 190 L 2.5TD | 97 | 4 | 2'000.-- | | F | 1,55t/Kasten |



Lauf-Nr. 107



Lauf-Nr. 110

Hauptversteigerung (Rampe) Vente aux enchères (rampe) Messa all'asta principale (rampa)
 Beginn / commencement / incomincia alle ore 07.00 h

| Nr. | Fz-Nr. | Fz-Art | Marke | Jg | Zyl. | Schätzung | Verkaufspreis | Fz-Zustand/Bemerkungen |
|-----|----------|----------------|--------|-------|------|------------------|-------------------|----------------------------|
| No | No-veh. | Genre du vhc | Marque | Année | Cyl | Somme d'estimat. | Prix de vente | Etat du vhc/remarques |
| No | No-veic. | Genere di veic | Marca | anno | Cil | Stima | Prezzo di vendita | Stato di veic/osservazioni |

| | | | | | | | | | |
|-----|----|-------|-------------------|-----------------------|----|---|----------|--------|----------------|
| 120 | M+ | 20393 | Lieferw/voit/livr | Ford Transit 120 | 94 | 4 | 1'000.-- | F | 1t/Brücke |
| 121 | M+ | 9408 | Pw/voit/autovett | VW Typ 2 | 87 | 4 | 800.-- | V | Bürowagen 3 Pl |
| 122 | M+ | 14120 | Pw/voit/autovett | VW T4 Syncro | 97 | 5 | 2'000.-- | F | Kombi 9 Pl |
| 123 | M+ | 8857 | Pw/voit/autovett | VW Typ 2 | 89 | 4 | 800.-- | F | Kombi 9 Pl |
| 124 | M+ | 1553 | Pw/voit/autovett | VW Typ 2 Syncro | 85 | 4 | 1'000.-- | V | Kombi 9 Pl |
| 125 | M+ | 20294 | Pw/voit/autovett | VW Typ 2 | 91 | 4 | 800.-- | V | Kombi 9 Pl |
| 126 | M+ | 5722 | Pw/voit/autovett | VW Typ 2 | 91 | 4 | 800.-- | F | Kombi 9 Pl |
| 127 | M+ | 1558 | Pw/voit/autovett | VW Typ 2 Syncro | 85 | 4 | 1'000.-- | V | Kombi 9 Pl |
| 128 | M+ | 8794 | Pw/voit/autovett | VW Typ 2 | 89 | 4 | 800.-- | V | Kombi 9 Pl |
| 129 | M+ | 8835 | Pw/voit/autovett | VW Typ 2 | 89 | 4 | 800.-- | V | Kombi 9 Pl |
| 130 | M+ | 1560 | Pw/voit/autovett | VW Typ 2 Syncro | 85 | 4 | 1'000.-- | V | Kombi 9 Pl |
| 131 | M+ | 9369 | Pw/voit/autovett | VW Typ 2 | 87 | 4 | 800.-- | V | Bürowagen 3 Pl |
| 132 | M+ | 22861 | Pw/voit/autovett | Fiat Scudo 1.9 TD-CAT | 98 | 4 | 2'000.-- | F | 7 Pl |
| 133 | M+ | 9572 | Pw/voit/autovett | VW Typ 2 | 88 | 4 | 800.-- | F | Kombi 9 Pl |
| 134 | M+ | 10873 | Pw/voit/autovett | VW Typ 2 | 85 | 4 | 800.-- | F | Kombi 9 Pl |
| 135 | M+ | 8831 | Pw/voit/autovett | VW Typ 2 | 89 | 4 | 800.-- | V | Kombi 9 Pl |
| 136 | M+ | 1562 | Pw/voit/autovett | VW Typ 2 Syncro | 85 | 4 | 1'000.-- | V | Kombi 9 Pl |
| 137 | M+ | 10878 | Pw/voit/autovett | VW Typ 2 | 85 | 4 | 800.-- | F | Kombi 9 Pl |
| 138 | M+ | 5720 | Pw/voit/autovett | VW Typ 2 | 91 | 4 | 800.-- | F | Kombi 9 Pl |
| 139 | M+ | 20426 | Lieferw/voit/livr | VW Typ 2 Syncro | 86 | 4 | 500.-- | A | Kasten |
| 140 | M+ | 1563 | Pw/voit/autovett | VW Typ 2 Syncro | 85 | 4 | 1'000.-- | V | Kombi 9 Pl |
| 141 | M+ | 43612 | Lieferw/voit/livr | Pinzgauer 6x6 | 75 | 4 | 3'000.-- | 6300 | F Kasten/Sanw |
| 142 | M+ | 43618 | Lieferw/voit/livr | Pinzgauer 6x6 | 75 | 4 | 3'000.-- | 6200 | F Kasten/Sanw |
| 143 | M+ | 43542 | Lieferw/voit/livr | Pinzgauer 6x6 | 75 | 4 | 3'000.-- | 10200 | F Kasten/Sanw |
| 144 | M+ | 43547 | Lieferw/voit/livr | Pinzgauer 6x6 | 75 | 4 | 3'000.-- | 5900 | F Kasten/Sanw |
| 145 | M+ | 80070 | Lieferw/voit/livr | Pinzgauer 6x6 | 83 | 4 | 3'000.-- | 10'800 | F Kasten |
| 146 | M+ | 43767 | Lieferw/voit/livr | Pinzgauer 6x6 | 75 | 4 | 3'000.-- | 7400 | F Kasten/Sanw |
| 147 | M+ | 43758 | Lieferw/voit/livr | Pinzgauer 6x6 | 75 | 4 | 2'000.-- | 3'000 | A Kasten/Sanw |
| 148 | M+ | 80299 | Lieferw/voit/livr | Pinzgauer 6x6 | 73 | 4 | 3'000.-- | 6300 | F Kasten |
| 149 | M+ | 43524 | Lieferw/voit/livr | Pinzgauer 6x6 | 75 | 4 | 3'000.-- | 4800 | F Kasten/Sanw |
| 150 | M+ | 80888 | Lieferw/voit/livr | Pinzgauer 6x6 | 73 | 4 | 3'000.-- | 7300 | F Kasten |
| 151 | M+ | 16818 | Lieferw/voit/livr | Puch 230 GE | 89 | 4 | 5'000.-- | 8100 | V 8 Pl |
| 152 | M+ | 16829 | Lieferw/voit/livr | Puch 230 GE | 92 | 4 | 5'000.-- | 8800 | V 8 Pl |



Lauf-Nr. 177



Lauf-Nr. 142

Hauptversteigerung (Rampe) Vente aux enchères (rampe) Messa all'asta principale (rampa)
 Beginn / commencement / incomincia alle ore 07.00 h

| Nr. | Fz-Nr. | Fz-Art | Marke | Jg | Zyl. | Schätzung | Verkaufspreis | Fz-Zustand/Bemerkungen |
|-----|----------|----------------|--------|-------|------|------------------|-------------------|----------------------------|
| No | No-vhc. | Genre du vhc | Marque | Année | Cyl | Somme d'estimat. | Prix de vente | Etat du vhc/remarques |
| No | No-veic. | Genere di veic | Marca | anno | Cil | Stima | Prezzo di vendita | Stato di veic/osservazioni |

| | | | | | | | | | | |
|-----|-----|-------|-------------------|------------------------|----|---|----------|-------|---|-------------------------|
| 153 | M+ | 16831 | Lieferw/voit/livr | Puch 230 GE | 89 | 4 | 5'000.-- | 8700 | V | 8 PI |
| 154 | M+ | 16950 | Lieferw/voit/livr | Puch 230 GE | 92 | 4 | 5'000.-- | 8200 | V | 8 PI |
| 155 | M+ | 16952 | Lieferw/voit/livr | Puch 230 GE | 92 | 4 | 5'000.-- | 8500 | V | 8 PI |
| 156 | M+ | 16957 | Lieferw/voit/livr | Puch 230 GE | 89 | 4 | 5'000.-- | 8600 | V | 8 PI |
| 157 | M+ | 17014 | Lieferw/voit/livr | Puch 230 GE | 92 | 4 | 5'000.-- | 8100 | V | 8 PI |
| 158 | M+ | 17018 | Lieferw/voit/livr | Puch 230 GE | 92 | 4 | 5'000.-- | 8400 | V | 8 PI |
| 159 | M+ | 17202 | Lieferw/voit/livr | Puch 230 GE | 94 | 4 | 5'000.-- | 8400 | V | 8 PI |
| 160 | M+ | 17216 | Lieferw/voit/livr | Puch 230 GE | 89 | 4 | 5'000.-- | 8400 | V | 8 PI |
| 161 | A | 47275 | Arbeitskarren | Wayne 866 | 77 | 4 | 300.-- | | K | Kehrmaschine |
| 162 | M+ | 23697 | Motorkarren | Cushman 898 335-9120 | 92 | E | 200.-- | | F | 3 KW /mit Brücke |
| 163 | GRD | 3551 | Motorkarren | Oerlikon | 51 | E | 200.-- | | F | 3.6KW/Schlepper |
| 164 | M+ | 20479 | Arbeitskarren | Esslingen DG 2.5RF | 67 | 4 | 1'000.-- | | F | 2,5t/Gabelstapler |
| 165 | M+ | 23455 | Lieferw/voit/livr | Bucher GT 1200S | 85 | 4 | 2'000.-- | | F | Kippbrücke/ohne Zubehör |
| 166 | GRD | 3121 | Motorhandwagen | Ameise EJE KMS-B 16 G | 82 | E | 200.-- | | F | Deichselstapler |
| 167 | GRD | 3671 | Arbeitskarren | Stoeklin EFI 1600 | 88 | E | 500.-- | | F | Pratzenstapler-El-Quers |
| 168 | GRD | 1983 | Motorhandwagen | Ameise EJCZ 12.5 G SEV | 74 | E | 200.-- | | F | Deichselstapler |
| 169 | GRD | 3122 | Motorhandwagen | Ameise EJE KMS-B 16 G | 82 | E | 200.-- | | F | Deichselstapler |
| 170 | M+ | 20213 | Arbeitskarren | DULEVO 120 DM | 91 | 4 | 1'000.-- | | V | Kehrmaschine |
| 171 | M+ | 21038 | Pw/voit/autovett | Ford Transit 120 | 94 | 4 | 800.-- | | F | 9 PI |
| 172 | M+ | 20638 | Arbeitsmaschine | GMC K 3500 | 79 | 8 | 2'000.-- | | F | Löschwagen L79 |
| 173 | M+ | 40152 | Lastw/cam/autoc | Unimog S 404 | 70 | 6 | 1'000.-- | 7100 | V | Kasten |
| 174 | M+ | 47739 | Lastw/cam/autoc | Unimog S 404 | 69 | 6 | 1'000.-- | 4600 | F | Wartungswagen |
| 175 | M+ | 20633 | Arbeitsmaschine | GMC K 3500 | 79 | 8 | 2'000.-- | | F | Löschwagen L79 |
| 176 | M+ | 21014 | Pw/voit/autovett | Ford Transit 120 | 94 | 4 | 800.-- | | F | 9 PI |
| 177 | M+ | 21050 | Pw/voit/autovett | Ford Transit 120 | 94 | 4 | 800.-- | | F | 9 PI |
| 178 | M+ | 20634 | Arbeitsmaschine | GMC K 3500 | 79 | 8 | 2'000.-- | | F | Löschwagen L79 |
| 179 | M+ | 66021 | Pw/voit/autovett | Jeep CJ-5 12V | 68 | 4 | 4'000.-- | 13100 | F | mit Schneepflug |
| 180 | M+ | 4639 | Pw/voit/autovett | VW Typ 2 Syncro | 91 | 4 | 2'000.-- | | V | Ambulanz |
| 181 | M+ | 43919 | Lieferw/voit/livr | Pinzgauer 6x6 | 82 | 4 | 3'000.-- | 6500 | F | Kasten/Sanw |
| 182 | M+ | 43957 | Lieferw/voit/livr | Pinzgauer 6x6 | 82 | 4 | 3'000.-- | 6000 | F | Kasten/Sanw |
| 183 | M+ | 43872 | Lieferw/voit/livr | Pinzgauer 6x6 | 82 | 4 | 3'000.-- | 6200 | F | Kasten/Sanw |
| 184 | M+ | 43992 | Lieferw/voit/livr | Pinzgauer 6x6 | 82 | 4 | 3'000.-- | 5900 | F | Kasten/Sanw |
| 185 | M+ | 44039 | Lieferw/voit/livr | Pinzgauer 6x6 | 82 | 4 | 3'000.-- | 7200 | F | Kasten/Sanw |



Lauf-Nr. 113



Lauf-Nr. 179

Hauptversteigerung (Rampe) Vente aux enchères (rampe) Messa all'asta principale (rampa)

Beginn / commencement / incomincia alle ore 07.00 h

| Nr. | Fz-Nr. | Fz-Art | Marke | Jg | Zyl. | Schätzung | Verkaufspreis | Fz-Zustand/Bemerkungen |
|-----|----------|----------------|--------|-------|------|------------------|-------------------|----------------------------|
| No | No-vhc. | Genre du vhc | Marque | Année | Cyl | Somme d'estimat. | Prix de vente | Etat du vhc/remarques |
| No | No-veic. | Genere di veic | Marca | anno | Cil | Stima | Prezzo di vendita | Stato di veic/osservazioni |

| | | | | | | | | | | |
|-----|----|-------|-------------------|--------------------------|------|---|-----------|-------|---|----------------|
| 186 | M+ | 43971 | Lieferw/voit/livr | Pinzgauer 6x6 | 82 | 4 | 3'000.-- | 6'700 | F | Kasten/Sanw |
| 187 | M+ | 43746 | Lieferw/voit/livr | Pinzgauer 6x6 | 75 | 4 | 3'000.-- | 6'100 | F | Kasten/Sanw |
| 188 | M+ | 44066 | Lieferw/voit/livr | Pinzgauer 6x6 | 83 | 4 | 3'000.-- | 7'300 | F | Kasten/Sanw |
| 189 | M+ | 44037 | Lieferw/voit/livr | Pinzgauer 6x6 | 82 | 4 | 3'000.-- | 7'000 | F | Kasten/Sanw |
| 190 | M+ | 20452 | Lieferw/voit/livr | Ford Transit 120 | 94 | 4 | 1'000.-- | | F | 1t/Brücke |
| 191 | M+ | 29359 | Pw/voit/autovett | Opel Vectra B 20 CVAN | 97 | 4 | 500.-- | | F | Kombi |
| 192 | M+ | 22452 | Pw/voit/autovett | Fiat Marea 2.0 | 97 | 5 | 800.-- | | F | |
| 193 | M+ | 2032 | Pw/voit/autovett | VW Passat 1800 | 90 | 4 | 500.-- | | F | Kombi |
| 194 | M+ | 45491 | Pw/voit/autovett | Toyota Corolla 4 WD | 93 | 4 | 1'000.-- | | V | Wagon |
| 195 | M+ | 12226 | Pw/voit/autovett | Opel Omega B 2,0i | 95 | 4 | 800.-- | | F | |
| 196 | M+ | 28171 | Pw/voit/autovett | Opel Vectra A 2,0i | 93 | 4 | 400.-- | | V | |
| 197 | M+ | 23265 | Pw/voit/autovett | VW Typ 2 Syncro | 91 | 4 | 1'000.-- | | V | 6 PI |
| 198 | M+ | 1564 | Pw/voit/autovett | VW Typ 2 Syncro | 85 | 4 | 1'000.-- | | V | Kombi 9 PI |
| 199 | M+ | 5719 | Pw/voit/autovett | VW Typ 2 | 91 | 4 | 800.-- | | F | Kombi 9 PI |
| 200 | M+ | 8734 | Pw/voit/autovett | VW Typ 2 | 91 | 4 | 800.-- | | F | Kombi 9 PI |
| 201 | M+ | 24052 | Pw/voit/autovett | Ford Mondeo 2,0 | 98 | 4 | 500.-- | | V | Limousine |
| 202 | M+ | 1566 | Pw/voit/autovett | VW Passat 1800 | 94 | 4 | 500.-- | | V | Kombi |
| 203 | M+ | 1519 | Pw/voit/autovett | VW Passat 1800 | 94 | 4 | 500.-- | | V | Kombi |
| 204 | M+ | 12545 | Pw/voit/autovett | VW Vento | 95 | 4 | 800.-- | | F | |
| 205 | M+ | 13156 | Pw/voit/autovett | VW Passat 1800 | 95 | 4 | 500.-- | | V | Kombi |
| 206 | M+ | 13593 | Pw/voit/autovett | Opel Astra F 1,6i | 96 | 4 | 500.-- | | F | Kombi |
| 207 | M+ | 10028 | Pw/voit/autovett | VW Typ 2 | 91 | 4 | 800.-- | | F | Kombi 9 PI |
| 208 | M+ | 5729 | Pw/voit/autovett | VW Typ 2 | 91 | 4 | 800.-- | | F | Bürowagen 3 PI |
| 209 | M+ | 9052 | Pw/voit/autovett | VW Typ 2 | 85 | 4 | 800.-- | | F | Kombi 9 PI |
| 210 | M+ | 9590 | Pw/voit/autovett | VW Typ 2 | 88 | 4 | 800.-- | | F | Kombi 9 PI |
| 211 | M+ | 44086 | Lieferw/voit/livr | Pinzgauer 6x6 | 83 | 4 | 3'000.-- | 6'200 | F | Kasten/Sanw |
| 212 | M+ | 44098 | Lieferw/voit/livr | Pinzgauer 6x6 | 83 | 4 | 3'000.-- | 6'100 | F | Kasten/Sanw |
| 213 | M+ | 43602 | Lieferw/voit/livr | Pinzgauer 6x6 | 75 | 4 | 3'000.-- | 6'900 | F | Kasten/Sanw |
| 214 | M+ | 43548 | Lieferw/voit/livr | Pinzgauer 6x6 | 75 | 4 | 3'000.-- | 6'300 | F | Kasten/Sanw |
| 215 | M+ | 80887 | Lieferw/voit/livr | Pinzgauer 6x6 | 73 | 4 | 3'000.-- | 5'000 | F | Kasten |
| 216 | M+ | 43950 | Lieferw/voit/livr | Pinzgauer 6x6 | 82 | 4 | 3'000.-- | 6'400 | F | Kasten/Sanw |
| 217 | M+ | 43786 | Lieferw/voit/livr | Pinzgauer 6x6 | 76 | 4 | 3'000.-- | 5'100 | F | Kasten/Sanw |
| 218 | M+ | 43572 | Lieferw/voit/livr | Pinzgauer 6x6 | 75 | 4 | 3'000.-- | 5'000 | F | Kasten/Sanw |
| 219 | M+ | 43623 | Lieferw/voit/livr | Pinzgauer 6x6 | 75 | 4 | 3'000.-- | 5'500 | F | Kasten/Sanw |
| 220 | M+ | 43752 | Lieferw/voit/livr | Pinzgauer 6x6 | 75 | 4 | 3'000.-- | 5'200 | F | Kasten/Sanw |
| 221 | M+ | 15681 | Lieferw/voit/livr | Puch 230 GE | 90 | 4 | 5'000.-- | 7'900 | V | 8 PI |
| 222 | M+ | 15757 | Lieferw/voit/livr | Puch 230 GE | 89 | 4 | 5'000.-- | 7'600 | V | 8 PI |
| 223 | M+ | 16123 | Lieferw/voit/livr | Puch 230 GE | 89 | 4 | 5'000.-- | 7'600 | V | 8 PI |
| 224 | M+ | 16158 | Lieferw/voit/livr | Puch 230 GE | 89 | 4 | 5'000.-- | 7'600 | V | 8 PI |
| 225 | M+ | 16259 | Lieferw/voit/livr | Puch 230 GE | 91 | 4 | 5'000.-- | 7'300 | V | 8 PI |
| 226 | M+ | 16324 | Lieferw/voit/livr | Puch 230 GE | 89 | 4 | 5'000.-- | 7'800 | V | 8 PI |
| 227 | M+ | 16392 | Lieferw/voit/livr | Puch 230 GE | 91 | 4 | 5'000.-- | 7'600 | V | 8 PI |
| 228 | M+ | 16471 | Lieferw/voit/livr | Puch 230 GE | 89 | 4 | 5'000.-- | 7'900 | V | 8 PI |
| 229 | M+ | 16473 | Lieferw/voit/livr | Puch 230 GE | 89 | 4 | 5'000.-- | 8'700 | V | 8 PI |
| 230 | M+ | 16812 | Lieferw/voit/livr | Puch 230 GE | 89 | 4 | 5'000.-- | 7'900 | V | 8 PI |
| 231 | M+ | 7915 | Pw/voit/autovett | Peugeot 607 2.2 HDI | 2003 | 4 | 11'500.-- | | V | Limousine |
| 232 | M+ | 8462 | Pw/voit/autovett | Fiat Stilo SW 1,9 JTD115 | 2003 | 4 | 9'000.-- | | V | Stationswagen |
| 233 | M+ | 6313 | Pw/voit/autovett | BMW 525i | 2002 | 6 | 13'500.-- | | V | Berlina |
| 234 | M+ | 8209 | Pw/voit/autovett | Opel Frontera B22TD | 2003 | 4 | 15'500.-- | | V | Limousine |
| 235 | M+ | 7531 | Pw/voit/autovett | Opel Vectra B 18 CVAN | 2001 | 4 | 3'500.-- | | V | Stationswagen |
| 236 | M+ | 8518 | Pw/voit/autovett | Fiat Stilo SW 1,9 JTD115 | 2003 | 4 | 10'000.-- | | V | Stationswagen |
| 237 | M+ | 6237 | Pw/voit/autovett | VW Passat 2.3 V5 | 2001 | 5 | 8'000.-- | | V | Limousine |
| 238 | M+ | 7459 | Pw/voit/autovett | Audi A4 Avant 2.5 TDI | 2003 | 6 | 13'000.-- | | V | Quattro |

Hauptversteigerung (Rampe)

Vente aux enchères (rampe)

Messa all'asta principale (rampa)

Beginn / commencement / incomincia alle ore 07.00 h

| Nr. | Fz-Nr. | Fz-Art | Marke | Jg | Zyl. | Schätzung | Verkaufspreis | Fz-Zustand/Bemerkungen |
|-----|----------|----------------|--------|-------|------|------------------|-------------------|----------------------------|
| No | No-vhc. | Genre du vhc | Marque | Année | Cyl | Somme d'estimat. | Prix de vente | Etat du vhc/remarques |
| No | No-veic. | Genere di veic | Marca | anno | Cil | Stima | Prezzo di vendita | Stato di veic/osservazioni |

| | | | | | | | | | |
|-----|-----|--------|-------------------|-----------------------------|------|---|-----------|---|----------------|
| 239 | M+ | 6671 | Pw/voit/autovett | Mercedes-Benz C 250 T | 1999 | 5 | 14'500.-- | V | Stationswagen |
| 240 | M+ | 8286 | Pw/voit/autovett | Ford Focus C-MAX 2. TDCI | 2004 | 4 | 13'500.-- | V | Van |
| 241 | M+ | 11224 | Pw/voit/autovett | Opel Omega A 2,4i | 95 | 4 | 300.-- | V | |
| 242 | M+ | 23909 | Pw/voit/autovett | VW Passat 1,9 TDI | 97 | 4 | 800.-- | V | Limousine |
| 243 | TI | 217854 | Pw/voit/autovett | VW Golf III 1800 Syncro | 96 | 4 | 1'000.-- | F | Kombi |
| 244 | TI | 158697 | Pw/voit/autovett | Ford Mondeo 2,0 | 95 | 4 | 500.-- | F | Limousine |
| 245 | M+ | 4741 | Pw/voit/autovett | VW Golf III 1400 | 94 | 4 | 500.-- | F | |
| 246 | M+ | 5466 | Pw/voit/autovett | VW Golf II 1300 | 88 | 4 | 300.-- | V | |
| 247 | GRD | 4109 | Pw/voit/autovett | VW 23 | 78 | 4 | 800.-- | F | |
| 248 | BE | 104983 | Lieferw/voit/livr | Toyota Hiace 4WD | 88 | 4 | 1'500.-- | V | Kasten |
| 249 | M+ | 20641 | Arbeitsmaschine | GMC K 3500 | 79 | 8 | 2'000.-- | V | Löschwagen L79 |
| 250 | M+ | 23927 | Pw/voit/autovett | Toyota Land-Cruiser - BJ 75 | 88 | 6 | 2'000.-- | F | 5 PI |
| 251 | M+ | 43984 | Lieferw/voit/livr | Pinzgauer 6x6 | 82 | 4 | 3'000.-- | F | Kasten/Sanw |
| 252 | M+ | 43805 | Lieferw/voit/livr | Pinzgauer 6x6 | 81 | 4 | 3'000.-- | F | Kasten/Sanw |
| 253 | M+ | 43772 | Lieferw/voit/livr | Pinzgauer 6x6 | 75 | 4 | 3'000.-- | F | Kasten/Sanw |
| 254 | M+ | 43920 | Lieferw/voit/livr | Pinzgauer 6x6 | 82 | 4 | 3'000.-- | F | Kasten/Sanw |
| 255 | M+ | 43960 | Lieferw/voit/livr | Pinzgauer 6x6 | 82 | 4 | 3'000.-- | F | Kasten/Sanw |
| 256 | M+ | 44078 | Lieferw/voit/livr | Pinzgauer 6x6 | 83 | 4 | 3'000.-- | F | Kasten/Sanw |
| 257 | M+ | 44034 | Lieferw/voit/livr | Pinzgauer 6x6 | 82 | 4 | 3'000.-- | F | Kasten/Sanw |
| 258 | M+ | 43755 | Lieferw/voit/livr | Pinzgauer 6x6 | 75 | 4 | 3'000.-- | F | Kasten/Sanw |
| 259 | M+ | 43716 | Lieferw/voit/livr | Pinzgauer 6x6 | 75 | 4 | 3'000.-- | F | Kasten/Sanw |
| 260 | M+ | 44025 | Lieferw/voit/livr | Pinzgauer 6x6 | 82 | 4 | 3'000.-- | F | Kasten/Sanw |
| 261 | M+ | 15315 | Lieferw/voit/livr | Puch 230 GE | 89 | 4 | 5'000.-- | V | 8 PI |
| 262 | M+ | 15321 | Lieferw/voit/livr | Puch 230 GE | 89 | 4 | 5'000.-- | V | 8 PI |
| 263 | M+ | 15322 | Lieferw/voit/livr | Puch 230 GE | 89 | 4 | 5'000.-- | V | 8 PI |
| 264 | M+ | 15337 | Lieferw/voit/livr | Puch 230 GE | 89 | 4 | 5'000.-- | V | 8 PI |
| 265 | M+ | 15347 | Lieferw/voit/livr | Puch 230 GE | 89 | 4 | 5'000.-- | V | 8 PI |
| 266 | M+ | 15554 | Lieferw/voit/livr | Puch 230 GE | 90 | 4 | 5'000.-- | V | 8 PI |
| 267 | M+ | 15617 | Lieferw/voit/livr | Puch 230 GE | 89 | 4 | 5'000.-- | V | 8 PI |
| 268 | M+ | 15619 | Lieferw/voit/livr | Puch 230 GE | 89 | 4 | 5'000.-- | V | 8 PI |
| 269 | M+ | 15633 | Lieferw/voit/livr | Puch 230 GE | 89 | 4 | 5'000.-- | V | 8 PI |
| 270 | M+ | 15673 | Lieferw/voit/livr | Puch 230 GE | 90 | 4 | 5'000.-- | V | 8 PI |
| 271 | M+ | 17798 | Lieferw/voit/livr | Puch 230 GE | 89 | 4 | 5'000.-- | V | 8 PI |
| 272 | M+ | 17799 | Lieferw/voit/livr | Puch 230 GE | 89 | 4 | 5'000.-- | V | 8 PI |
| 273 | M+ | 17909 | Lieferw/voit/livr | Puch 230 GE | 93 | 4 | 5'000.-- | V | 8 PI |
| 274 | M+ | 17973 | Lieferw/voit/livr | Puch 230 GE | 89 | 4 | 5'000.-- | V | 8 PI |
| 275 | M+ | 17982 | Lieferw/voit/livr | Puch 230 GE | 89 | 4 | 5'000.-- | V | 8 PI |
| 276 | M+ | 17992 | Lieferw/voit/livr | Puch 230 GE | 89 | 4 | 5'000.-- | V | 8 PI |
| 277 | M+ | 19121 | Lieferw/voit/livr | Puch 230 GE | 90 | 4 | 5'000.-- | V | 8 PI |
| 278 | M+ | 15316 | Lieferw/voit/livr | Puch 230 GE | 89 | 4 | 5'000.-- | F | 8 PI |
| 279 | M+ | 15866 | Lieferw/voit/livr | Puch 230 GE | 90 | 4 | 5'000.-- | F | 8 PI |
| 280 | M+ | 16963 | Lieferw/voit/livr | Puch 230 GE | 92 | 4 | 5'000.-- | F | 8 PI |
| 281 | M+ | 7465 | Pw/voit/autovett | Volvo S60 2.4 | 2001 | 5 | 7'500.-- | V | Limousine |
| 282 | M+ | 7978 | Pw/voit/autovett | Citroen C8 2.0 16V HDI FAP | 2004 | 4 | 11'000.-- | V | Limousine |
| 283 | M+ | 6656 | Pw/voit/autovett | Audi A4 Avant 2.4 | 2000 | 6 | 6'500.-- | V | Stationswagen |
| 284 | M+ | 7631 | Pw/voit/autovett | Audi A4 Avant 2.5 TDI | 2000 | 6 | 8'000.-- | V | Stationswagen |
| 285 | M+ | 8537 | Pw/voit/autovett | Fiat Stilo SW 1,9 JTD115 | 2003 | 4 | 9'500.-- | V | Stationswagen |
| 286 | M+ | 6576 | Pw/voit/autovett | Citroen C5 2.0i 16V | 2003 | 4 | 12'500.-- | V | Limousine |
| 287 | M+ | 7579 | Pw/voit/autovett | Mercedes-Benz A170 CDI | 2001 | 4 | 7'000.-- | V | Limousine |
| 288 | M+ | 6551 | Pw/voit/autovett | Citroen C5 2.2 HDI | 2003 | 4 | 13'500.-- | V | Break |
| 289 | M+ | 7067 | Pw/voit/autovett | Renault Laguna GT 2.2DCI | 2003 | 4 | 9'500.-- | V | Stationswagen |
| 290 | M+ | 6290 | Pw/voit/autovett | Peugeot 806 2. OHDI 16V | 2001 | 4 | 6'500.-- | V | Van |
| 291 | M+ | 43741 | Lieferw/voit/livr | Pinzgauer 6x6 | 75 | 4 | 3'000.-- | F | Kasten/Sanw |

Hauptversteigerung (Rampe) Vente aux enchères (rampe) Messa all'asta principale (rampa)
Beginn / commencement / incomincia alle ore 07.00 h

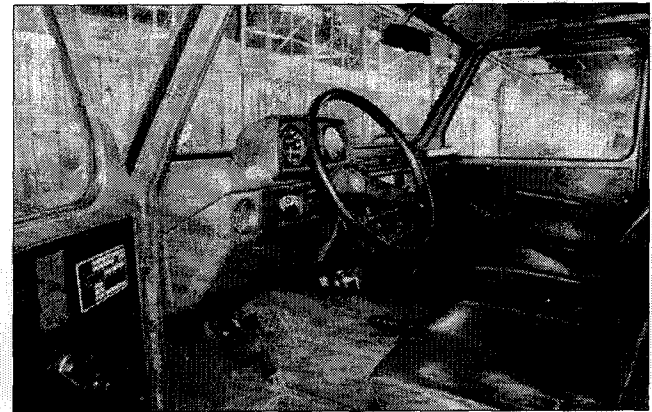
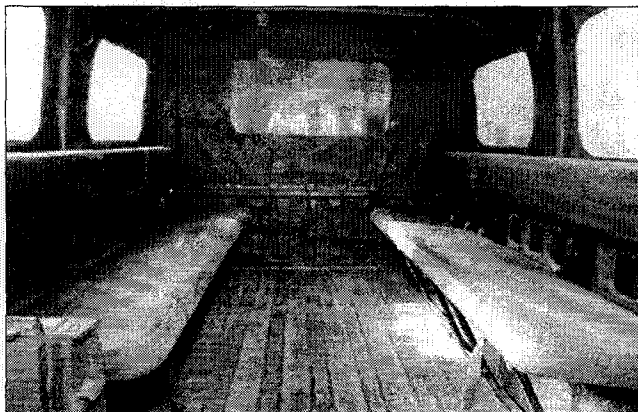
| Nr. | Fz-Nr. | Fz-Art | Marke | Jg | Zyl. | Schätzung | Verkaufspreis | Fz-Zustand/Bemerkungen |
|-----|----------|----------------|--------|-------|------|------------------|-------------------|----------------------------|
| No | No-vhc. | Genre du vhc | Marque | Année | Cyl | Somme d'estimat. | Prix de vente | Etat du vhc/remarques |
| No | No-veic. | Genere di veic | Marca | anno | Cil | Stima | Prezzo di vendita | Stato di veic/osservazioni |

| | | | | | | | | | |
|-----|----|-------|-------------------|---------------|----|---|----------|---|-------------|
| 292 | M+ | 43714 | Lieferw/voit/livr | Pinzgauer 6x6 | 75 | 4 | 3'000.-- | F | Kasten/Sanw |
| 293 | M+ | 43972 | Lieferw/voit/livr | Pinzgauer 6x6 | 82 | 4 | 3'000.-- | F | Kasten/Sanw |
| 294 | M+ | 43712 | Lieferw/voit/livr | Pinzgauer 6x6 | 75 | 4 | 3'000.-- | F | Kasten/Sanw |
| 295 | M+ | 43939 | Lieferw/voit/livr | Pinzgauer 6x6 | 82 | 4 | 3'000.-- | F | Kasten/Sanw |
| 296 | M+ | 43790 | Lieferw/voit/livr | Pinzgauer 6x6 | 76 | 4 | 3'000.-- | F | Kasten/Sanw |
| 297 | M+ | 43918 | Lieferw/voit/livr | Pinzgauer 6x6 | 82 | 4 | 3'000.-- | F | Kasten/Sanw |
| 298 | M+ | 43876 | Lieferw/voit/livr | Pinzgauer 6x6 | 82 | 4 | 3'000.-- | F | Kasten/Sanw |
| 299 | M+ | 44083 | Lieferw/voit/livr | Pinzgauer 6x6 | 83 | 4 | 3'000.-- | F | Kasten/Sanw |
| 300 | M+ | 44082 | Lieferw/voit/livr | Pinzgauer 6x6 | 83 | 4 | 3'000.-- | F | Kasten/Sanw |

„Steyr Puch 230 GE“

Fahrzeuge in „Hauptversteigerung“ (Rampe) ab Lauf-Nr. 81

Véhicules dans la „vente aux enchères“ (rampe) à partir du no. 81



Platzversteigerung

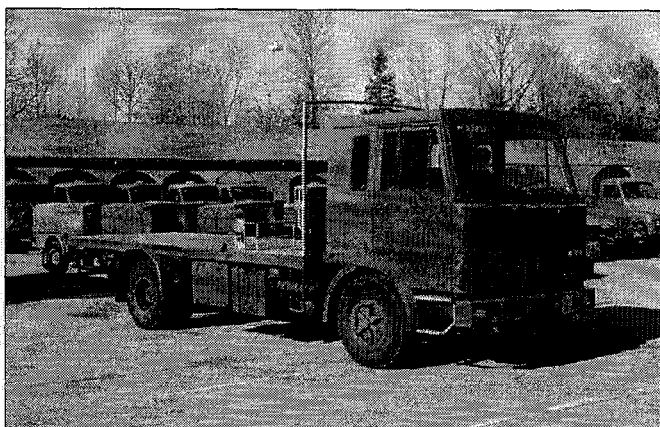
Vente aux enchères sur place

Vendita sul posto

Beginn / commencement / incomincia alle ore 07.30 h

| Nr. | Fz-Nr. | Fz-Art | Marke | Jg | Zyl. | Schätzung | Verkaufspreis | Fz-Zustand/Bemerkungen |
|-----|----------|----------------|--------|-------|------|------------------|-------------------|----------------------------|
| No | No-vhc. | Genre du vhc | Marque | Année | Cyl | Somme d'estimat. | Prix de vente | Etat du vhc/remarques |
| No | No-veic. | Genere di veic | Marca | anno | Cil | Stima | Prezzo di vendita | Stato di veic/osservazioni |

| | | | | | | | | | |
|-----|----|--------|-----------------|-----------------------|----|---|-----------|---|--------------------------------|
| 401 | M+ | 23202 | Sattelschlepper | Steyr 12 S 18/K34/4x4 | 94 | 6 | 8'000.-- | F | Mit Sattelanh. 4t M 120792 |
| 402 | M | 850927 | Anh/rem/rim | DIV/SIG | 75 | - | 500.-- | F | 2-achsig/mit Verdeck |
| 403 | M+ | 28890 | Lastw/cam/autoc | FBW 50V-E3 | 73 | 6 | 800.-- | V | Flz Tankw 8'600 Lt |
| 404 | M+ | 58965 | Lastw/cam/autoc | Saurer/Berna-2DM/2VM | 72 | 6 | 800.-- | F | 4,5t mit Hebebühne |
| 405 | M+ | 84677 | Lastw/cam/autoc | Steyr A 680 GL | 73 | 6 | 1'000.-- | F | Kasten |
| 406 | M+ | 3692 | Lastw/cam/autoc | Volvo FL 614 - 4x2 | 91 | 6 | 1'000.-- | F | 7t/mit Hebebühne |
| 407 | M+ | 84688 | Lastw/cam/autoc | Steyr A 680 GL | 73 | 6 | 1'000.-- | F | Kasten |
| 408 | M+ | 28984 | Lastw/cam/autoc | Saurer/Berna-2DM/2VM | 71 | 6 | 1'000.-- | F | Flz Tankw 5'300 Lt |
| 409 | M+ | 60393 | Lastw/cam/autoc | Saurer/Berna-2DM/2VM | 70 | 6 | 800.-- | F | 4,9t |
| 410 | M+ | 31168 | Lastw/cam/autoc | Steyr A 680 G | 72 | 6 | 500.-- | F | 3t |
| 411 | M+ | 28905 | Lastw/cam/autoc | FBW 50V-E3 | 73 | 6 | 800.-- | F | Flz Tankw 8'600 Lt |
| 412 | M+ | 28868 | Lastw/cam/autoc | FBW 50V-E3 | 72 | 6 | 800.-- | V | Flz Tankw 8'600 Lt |
| 413 | M+ | 28910 | Lastw/cam/autoc | FBW 50V-E3 | 73 | 6 | 800.-- | V | Flz Tankw 8'600 Lt |
| 414 | M+ | 28872 | Lastw/cam/autoc | FBW 50V-E3 | 72 | 6 | 800.-- | F | Flz Tankw 8'600 Lt |
| 415 | M+ | 28953 | Lastw/cam/autoc | FBW 50V-E3 | 74 | 6 | 800.-- | V | Flz Tankw 8'600 Lt |
| 416 | M+ | 31757 | Lastw/cam/autoc | Steyr A 680 GL | 73 | 6 | 800.-- | F | 3,3t |
| 417 | P | 94424 | Lastw/cam/autoc | IVECO ML 80E 18D | 98 | 6 | 15'000.-- | V | Brücke mit Ladekran Hiab 052.2 |
| 418 | M+ | 28990 | Lastw/cam/autoc | Saurer/Berna-2DM/2VM | 71 | 6 | 1'000.-- | F | Flz Tankw 5300 Lt |
| 419 | M+ | 61455 | Lastw/cam/autoc | Saurer/Berna-2DM/2VM | 70 | 6 | 800.-- | F | 4,9t |
| 420 | M+ | 61689 | Lastw/cam/autoc | Saurer/Berna-2DM/2VM | 65 | 6 | 800.-- | F | 4,9t |
| 421 | M+ | 61757 | Lastw/cam/autoc | Saurer/Berna-2DM/2VM | 65 | 6 | 800.-- | F | 4,9t |
| 422 | M+ | 59224 | Lastw/cam/autoc | Saurer/Berna-2DM/2VM | 75 | 6 | 800.-- | F | 4,9t |
| 423 | M+ | 61253 | Lastw/cam/autoc | Saurer/Berna-2DM/2VM | 71 | 6 | 800.-- | F | 4,9t |
| 424 | M+ | 62109 | Lastw/cam/autoc | Saurer/Berna-2DM/2VM | 67 | 6 | 800.-- | V | 4,9t |
| 425 | M+ | 62119 | Lastw/cam/autoc | Saurer/Berna-2DM/2VM | 67 | 6 | 800.-- | F | 4,9t |
| 426 | M+ | 59277 | Lastw/cam/autoc | Saurer/Berna-2DM/2VM | 76 | 6 | 800.-- | F | 4,9t |
| 427 | M+ | 62268 | Lastw/cam/autoc | Saurer/Berna-2DM/2VM | 68 | 6 | 800.-- | F | 4,9t |
| 428 | M+ | 62473 | Lastw/cam/autoc | Saurer/Berna-2DM/2VM | 68 | 6 | 800.-- | F | 4,9t |
| 429 | M+ | 59251 | Lastw/cam/autoc | Saurer/Berna-2DM/2VM | 76 | 6 | 800.-- | F | 4,9t |
| 430 | M+ | 59190 | Lastw/cam/autoc | Saurer/Berna-2DM/2VM | 75 | 6 | 800.-- | F | 4,9t |
| 431 | M+ | 60360 | Lastw/cam/autoc | Saurer/Berna-2DM/2VM | 70 | 6 | 800.-- | F | 4,9t |
| 432 | M+ | 62099 | Lastw/cam/autoc | Saurer/Berna-2DM/2VM | 67 | 6 | 800.-- | F | 4,9t |
| 433 | M+ | 58755 | Lastw/cam/autoc | Saurer/Berna-2DM/2VM | 71 | 6 | 800.-- | F | 4,9t |
| 434 | M+ | 59090 | Lastw/cam/autoc | Saurer/Berna-2DM/2VM | 75 | 6 | 800.-- | F | 4,9t |
| 435 | M+ | 31714 | Lastw/cam/autoc | Steyr A 680 GL | 71 | 6 | 800.-- | F | 3,3t |



Lauf-Nr. 472



Lauf-Nr. 401

Platzversteigerung

Vente aux enchères sur place

Vendita sul posto

Beginn / commencement / incomincia alle ore 07.30 h

| Nr. | Fz-Nr. | Fz-Art | Marke | Jg | Zyl. | Schätzung | Verkaufspreis | Fz-Zustand/Bemerkungen |
|-----|----------|----------------|--------|-------|------|------------------|-------------------|----------------------------|
| No | No-vhc. | Genre du vhc | Marque | Année | Cyl | Somme d'estimat. | Prix de vente | Etat du vhc/remarques |
| No | No-veic. | Genere di veic | Marca | anno | Cil | Stima | Prezzo di vendita | Stato di veic/osservazioni |

| | | | | | | | | |
|-----|-----|--------|-----------------|-----------------------------|----|---|-----------|----------------------------------|
| 436 | M+ | 30658 | Lastw/cam/autoc | Steyr A 680 G | 71 | 6 | 500.-- | V 3t |
| 437 | M+ | 32097 | Lastw/cam/autoc | Steyr A 680 GL | 74 | 6 | 800.-- | F 3,3t |
| 438 | M+ | 32120 | Lastw/cam/autoc | Steyr A 680 GL | 74 | 6 | 800.-- | F 3,3t |
| 439 | M+ | 32050 | Lastw/cam/autoc | Steyr A 680 GL | 74 | 6 | 800.-- | F 3,3t |
| 440 | M+ | 32031 | Lastw/cam/autoc | Steyr A 680 GL | 74 | 6 | 800.-- | F 3,3t |
| 441 | M+ | 32083 | Lastw/cam/autoc | Steyr A 680 GL | 74 | 6 | 800.-- | F 3,3t |
| 442 | M+ | 30338 | Lastw/cam/autoc | Steyr A 680 G | 70 | 6 | 500.-- | F 3t |
| 443 | M+ | 31134 | Lastw/cam/autoc | Steyr A 680 G | 71 | 6 | 500.-- | F 3t |
| 444 | M+ | 31819 | Lastw/cam/autoc | Steyr A 680 GL | 73 | 6 | 800.-- | F 3,3t |
| 445 | M+ | 31820 | Lastw/cam/autoc | Steyr A 680 GL | 73 | 6 | 800.-- | F 3,3t |
| 446 | M+ | 32108 | Lastw/cam/autoc | Steyr A 680 GL | 74 | 6 | 800.-- | F 3,3t |
| 447 | M+ | 32086 | Lastw/cam/autoc | Steyr A 680 GL | 74 | 6 | 800.-- | F 3,3t |
| 448 | M+ | 30634 | Lastw/cam/autoc | Steyr A 680 G | 71 | 6 | 500.-- | F 3t |
| 449 | M+ | 31993 | Lastw/cam/autoc | Steyr A 680 GL | 73 | 6 | 800.-- | F 3,3t |
| 450 | M+ | 32112 | Lastw/cam/autoc | Steyr A 680 GL | 74 | 6 | 800.-- | F 3,3t |
| 451 | M+ | 32105 | Lastw/cam/autoc | Steyr A 680 GL | 74 | 6 | 800.-- | F 3,3t |
| 452 | M | 210518 | Anh/rem/rim | Menzi/Sameco | 64 | - | 200.-- | F 1t/1-achs/ig/mit Verdeck |
| 453 | A | 47940 | Anh/rem/rim | Contrafeu SA 3/4 | 65 | - | 100.-- | V Schlauchanh./1-achs/ig |
| 454 | M | 210379 | Anh/rem/rim | Menzi/Sameco | 64 | - | 200.-- | F 1t/1-achs/ig/mit Verdeck |
| 455 | Nr | 8 | Anh/rem/rim | Ehram Denzler | 30 | - | 100.-- | K Schlauchanh./1-achs/ig |
| 456 | M | 210519 | Anh/rem/rim | Menzi/Sameco | 64 | - | 200.-- | F 1t/1-achs/ig/mit Verdeck |
| 457 | Nr | 7 | Anh/rem/rim | Antifeu Lausanne | 30 | - | 100.-- | K Schlauchanh./1-achs/ig |
| 458 | M | 210403 | Anh/rem/rim | Menzi/Sameco | 64 | - | 200.-- | F 1t/1-achs/ig/mit Verdeck |
| 459 | GRD | 2241 | Anh/rem/rim | Ehram | 45 | - | 100.-- | F Schlauchanh./1-achs/ig |
| 460 | M | 210393 | Anh/rem/rim | Menzi/Sameco | 64 | - | 200.-- | F 1t/1-achs/ig/mit Verdeck |
| 461 | M | 210397 | Anh/rem/rim | Menzi/Sameco | 64 | - | 200.-- | F 1t/1-achs/ig/mit Verdeck |
| 462 | M | 600832 | Anh/rem/rim | K+W | 47 | - | 200.-- | F Erkundungsanh/1-achs/ig |
| 463 | M | 231077 | Anh/rem/rim | BZS / MSP 2 | 74 | 4 | 1'000.-- | F 1-achs/ig/Motorspritze |
| 464 | M | 600818 | Anh/rem/rim | K+W | 48 | - | 200.-- | F Erkundungsanh/1-achs/ig |
| 465 | M+ | 28725 | Lastw/cam/autoc | GMC CCKW 353 | 44 | 6 | 500.-- | K Tankwagen/Kein Fz-Ausweis |
| 466 | M | 791173 | Anh/rem/rim | Draize/BK 68 | 68 | - | 10'000.-- | F Bäckerei/2-achs/ig |
| 467 | M | 282923 | Anh/rem/rim | Frech-Hoch Sissach | 88 | - | 12'000.-- | V Anh 85/Werkstatt / W 70282 |
| 468 | M | 900135 | Anh/rem/rim | Ehram AL 13 | 75 | - | 200.-- | F Auszugleiter |
| 469 | M | 151500 | Anh/rem/rim | DIV/SIG | 74 | - | 300.-- | F 3,5t/2-achs/ig |
| 470 | M | 713036 | Anh/rem/rim | Genhard | 74 | - | 200.-- | F Betrstm/anh/1-achs/ig/Kasten |
| 471 | M | 713030 | Anh/rem/rim | Genhard | 73 | - | 200.-- | F Betrstm/anh/1-achs/ig/Kasten |
| 472 | M+ | 63852 | Lastw/cam/autoc | FBW 70 V-ESA | 83 | 6 | 1'500.-- | F Mit Brücke |
| 473 | M | 282639 | Anh/rem/rim | Frech-Hoch Sissach | 88 | - | 12'000.-- | V Anh 85/Werkstatt / W 70281 |
| 474 | M | 850930 | Anh/rem/rim | DIV/SIG | 75 | - | 500.-- | V 2-achs/ig/mit Verdeck |
| 475 | M | 231094 | Anh/rem/rim | Baumann Mobil WC | 77 | - | 400.-- | F Toilettenfahrzeug |
| 476 | M | 151462 | Anh/rem/rim | DIV/SIG | 74 | - | 800.-- | F Betrstm Umschlagmat/2-achs/ig |
| 477 | M | 152845 | Anh/rem/rim | DIV/SIG | 75 | - | 300.-- | F 3,5t/2-achs/ig |
| 478 | M | 282805 | Anh/rem/rim | Frech-Hoch Sissach | 88 | - | 12'000.-- | V Anh 85/Werkstatt / W 70278 |
| 479 | M | 152336 | Anh/rem/rim | DIV/SIG | 74 | - | 800.-- | F Betrstm Umschlagmat/2-achs/ig |
| 480 | M | 150356 | Anh/rem/rim | DIV/SIG | 72 | - | 800.-- | F Betrstm Umschlagmat/2-achs/ig |
| 481 | M | 770457 | Anh/rem/rim | Sauter/Krapf | 88 | - | 4'000.-- | F Desinfektions-Anh/2-achs/ig |
| 482 | M | 104117 | Anh/rem/rim | Sutter | 52 | - | 200.-- | F 0,45t/1-achs/ig |
| 483 | M | 102710 | Anh/rem/rim | DIV/W+F | 66 | - | 200.-- | F 0,47t/1-achs/ig |
| 484 | M | 102717 | Anh/rem/rim | DIV/W+F | 66 | - | 200.-- | F 0,47t/1-achs/ig |
| 485 | M | 820159 | Anh/rem/rim | Le Relais/K+W/Miller SG 400 | 73 | 4 | 800.-- | F El/Schweissgr/1-achs/ig |
| 486 | M | 102696 | Anh/rem/rim | DIV/W+F | 66 | - | 200.-- | F 0,47t/1-achs/ig |
| 487 | M | 600817 | Anh/rem/rim | K+W | 48 | - | 200.-- | F Erkundungsanh/1-achs/ig |
| 488 | M | 800532 | Anh/rem/rim | DIV/MUELLER | 74 | - | 800.-- | V 1-achs/ig/Motrd Rep Anh |
| 489 | M | 515283 | Anh/rem/rim | Zbinden/Mag 6 KVA | 83 | 2 | 800.-- | F Notstromgr/400/230 V/1-achs/ig |

Platzversteigerung

Vente aux enchères sur place

Vendita sul posto

Beginn / commencement / incomincia alle ore 07.30 h

| Nr. | Fz-Nr. | Fz-Art | Marke | Jg | Zyl. | Schätzung | Verkaufspreis | Fz-Zustand/Bemerkungen |
|-----|----------|----------------|--------|-------|------|------------------|-------------------|----------------------------|
| No | No-vhc. | Genre du vhc | Marque | Année | Cyl | Somme d'estimat. | Prix de vente | Etat du vhc/remarks |
| No | No-veic. | Genere di veic | Marca | anno | Cil | Stima | Prezzo di vendita | Stato di veic/osservazioni |

| | | | | | | | | | |
|-----|----|--------|-----------------|----------------------|----|---|----------|---|-------------------------------|
| 490 | M | 104370 | Anh/rem/rim | Sutter | 60 | - | 200.-- | F | 0,45t/1-achsig |
| 491 | M | 102697 | Anh/rem/rim | DIV/W+F | 66 | - | 200.-- | F | 0,47t/1-achsig |
| 492 | M | 826486 | Anh/rem/rim | Metalleger | 86 | - | 200.-- | F | 1-achsig/mit Verdeck |
| 493 | M | 103259 | Anh/rem/rim | DIV/W+F | 82 | - | 200.-- | F | 0,47t/1-achsig |
| 494 | M | 800474 | Anh/rem/rim | DIV/MUELLER | 74 | - | 800.-- | V | 1-achsig/Motrd Rep Anh |
| 495 | M | 515348 | Anh/rem/rim | Zbinden/Mag 6 KVA | 89 | 2 | 800.-- | V | Notstromgr/400/230 V/1-achsig |
| 496 | M | 104042 | Anh/rem/rim | Sutter | 52 | - | 200.-- | F | 0,45t/1-achsig |
| 497 | M | 101502 | Anh/rem/rim | Peter/Meteolabor | 96 | - | 400.-- | F | 1-achsig/Peilanh |
| 498 | M | 800525 | Anh/rem/rim | DIV/MUELLER | 74 | - | 800.-- | V | 1-achsig/Motrd Rep Anh |
| 499 | M | 600806 | Anh/rem/rim | K+W | 52 | - | 200.-- | F | Erkundungsanh/1-achsig |
| 500 | M | 104067 | Anh/rem/rim | Sutter | 52 | - | 200.-- | F | 0,45t/1-achsig |
| 501 | M | 615245 | Anh/rem/rim | KLL 15 | 52 | 3 | 100.-- | K | Kompressor |
| 502 | M | 102811 | Anh/rem/rim | DIV/W+F | 66 | - | 200.-- | F | 0,47t/1-achsig |
| 503 | Nr | 11 | Arbeitskarren | BW 90S | 71 | 1 | 800.-- | K | Doppelvibrationswalze/Diesel |
| 504 | Nr | 12 | Arbeitskarren | BW 90S | 71 | 1 | 800.-- | K | Doppelvibrationswalze/Diesel |
| 505 | Nr | 13 | Arbeitskarren | BW 90S | 71 | 1 | 800.-- | K | Doppelvibrationswalze/Diesel |
| 506 | Nr | 14 | Arbeitskarren | BW 90S | 71 | 1 | 800.-- | K | Doppelvibrationswalze/Diesel |
| 507 | Nr | 15 | Arbeitskarren | BW 90S | 71 | 1 | 800.-- | K | Doppelvibrationswalze/Diesel |
| 508 | Nr | 16 | Arbeitskarren | BW 90S | 71 | 1 | 800.-- | K | Doppelvibrationswalze/Diesel |
| 509 | Nr | 17 | Arbeitskarren | BW 90S | 71 | 1 | 800.-- | K | Doppelvibrationswalze/Diesel |
| 510 | BE | 29368 | Anh/rem/rim | BZS / MSP 2 | 86 | 4 | 1'000.-- | F | 1-achsig/Motorspritze |
| 511 | BE | 29374 | Anh/rem/rim | BZS / MSP 2 | 86 | 4 | 1'000.-- | F | 1-achsig/Motorspritze |
| 512 | BE | 29377 | Anh/rem/rim | BZS / KPR | 86 | 4 | 1'000.-- | F | 1-achsig/Kompressor |
| 513 | BE | 29378 | Anh/rem/rim | BZS / KPR | 86 | 4 | 1'000.-- | F | 1-achsig/Kompressor |
| 514 | BE | 30152 | Anh/rem/rim | BZS / MSP 2 | 86 | 4 | 1'000.-- | F | 1-achsig/Motorspritze |
| 515 | BE | 29379 | Anh/rem/rim | BZS / MA | 86 | - | 300.-- | F | 0,475t/1-achsig |
| 516 | BE | 29380 | Anh/rem/rim | BZS / MA | 86 | - | 300.-- | F | 0,475t/1-achsig |
| 517 | BE | 29381 | Anh/rem/rim | BZS / MA | 86 | - | 300.-- | F | 0,475t/1-achsig |
| 518 | BE | 29384 | Anh/rem/rim | BZS / MA | 86 | - | 300.-- | F | 0,475t/1-achsig |
| 519 | BE | 29385 | Anh/rem/rim | BZS / MA | 86 | - | 300.-- | F | 0,475t/1-achsig |
| 520 | BE | 29389 | Anh/rem/rim | BZS / MA | 86 | - | 300.-- | F | 0,475t/1-achsig |
| 521 | BE | 29394 | Anh/rem/rim | BZS / MA | 86 | - | 300.-- | F | 0,475t/1-achsig |
| 522 | BE | 29402 | Anh/rem/rim | BZS / MA | 86 | - | 300.-- | F | 0,475t/1-achsig |
| 523 | BE | 29404 | Anh/rem/rim | BZS / MA | 86 | - | 300.-- | F | 0,475t/1-achsig |
| 524 | BE | 29873 | Anh/rem/rim | BZS / MA | 86 | - | 300.-- | F | 0,475t/1-achsig |
| 525 | M+ | 32753 | Lastw/cam/autoc | Saurer 6 DM | 83 | 6 | 5'000.-- | A | 6t Unfall-Fahrzeug |
| 526 | M+ | 84682 | Lastw/cam/autoc | Steyr A 680 GL | 73 | 6 | 1'000.-- | F | Kasten |
| 527 | M+ | 58887 | Lastw/cam/autoc | Saurer/Berna-2DM/2VM | 72 | 6 | 800.-- | F | 4,9t |
| 528 | M+ | 28892 | Lastw/cam/autoc | FBW 50V-E3 | 73 | 6 | 800.-- | F | Fiz Tankw 8'600 Lt |
| 529 | M+ | 28981 | Lastw/cam/autoc | FBW 50V-E3 | 74 | 6 | 800.-- | F | Fiz Tankw 8'600 Lt |
| 530 | M+ | 62018 | Lastw/cam/autoc | Saurer/Berna-2DM/2VM | 67 | 6 | 800.-- | F | 4,9t |
| 531 | M+ | 28880 | Lastw/cam/autoc | FBW 50V-E3 | 73 | 6 | 800.-- | F | Fiz Tankw 8'600 Lt |
| 532 | M+ | 28904 | Lastw/cam/autoc | FBW 50V-E3 | 73 | 6 | 800.-- | F | Fiz Tankw 8'600 Lt |
| 533 | M+ | 84675 | Lastw/cam/autoc | Steyr A 680 GL | 73 | 6 | 1'000.-- | F | Kasten |
| 534 | M+ | 84680 | Lastw/cam/autoc | Steyr A 680 GL | 73 | 6 | 1'000.-- | F | Kasten |
| 535 | M+ | 32095 | Lastw/cam/autoc | Steyr A 680 GL | 74 | 6 | 800.-- | F | 3,3t |
| 536 | M+ | 61447 | Lastw/cam/autoc | Saurer/Berna-2DM/2VM | 69 | 6 | 800.-- | F | 4,9t |
| 537 | M | 231012 | Anh/rem/rim | Contrafeu | 72 | - | 200.-- | V | Auszugleiter |
| 538 | M | 231120 | Anh/rem/rim | Ehram AL22 | 75 | - | 200.-- | V | Auszugleiter |
| 539 | M | 850946 | Anh/rem/rim | DIV/SIG | 75 | - | 500.-- | F | 2-achsig/mit Verdeck |
| 540 | M | 153456 | Anh/rem/rim | DIV/SIG | 74 | - | 300.-- | F | 3,5t/2-achsig |
| 541 | M | 615243 | Anh/rem/rim | KLL 15 | 60 | 3 | 100.-- | K | Kompressor |
| 542 | M | 104038 | Anh/rem/rim | Sutter | 52 | - | 200.-- | F | 0,45t/1-achsig |
| 543 | M | 104226 | Anh/rem/rim | Sutter | 52 | - | 200.-- | F | 0,45t/1-achsig |

Platzversteigerung

Vente aux enchères sur place

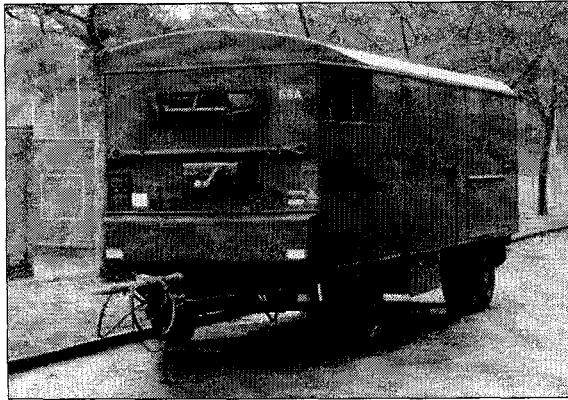
Vendita sul posto

Beginn / commencement / incomincia alle ore 07.30 h

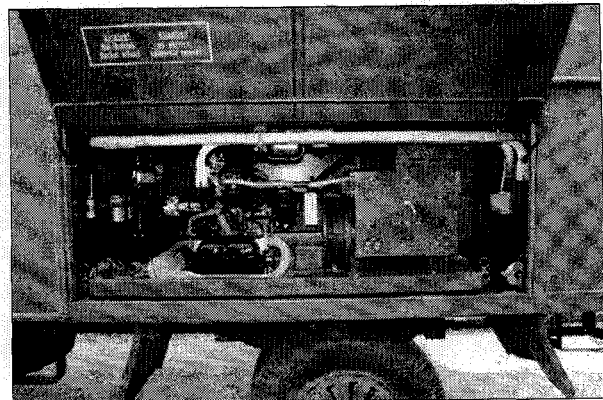
| Nr. | Fz-Nr. | Fz-Art | Marke | Jg | Zyl. | Schätzung | Verkaufspreis | Fz-Zustand/Bemerkungen |
|-----|----------|----------------|--------|-------|------|------------------|-------------------|----------------------------|
| No | No-vhc. | Genre du vhc | Marque | Année | Cyl | Somme d'estimat. | Prix de vente | Etat du vhc/remarques |
| No | No-veic. | Genere di veic | Marca | anno | Cil | Stima | Prezzo di vendita | Stato di veic/osservazioni |

| | | | | | | | | | |
|-----|-----|--------|-----------------|-----------------------------|----|---|-----------|---|--------------------------------|
| 544 | M | 800438 | Anh/rem/rim | DIV/MUELLER | 74 | - | 800.-- | F | 1-achsig/Motrd Rep Anh |
| 545 | M | 820038 | Anh/rem/rim | Le Relais/K+W/Miller SG 400 | 73 | 4 | 800.-- | V | El/Schweissgr/1-achsig |
| 546 | M | 103263 | Anh/rem/rim | DIV/W+F | 82 | - | 200.-- | F | 0,47t/1-achsig |
| 547 | M | 103162 | Anh/rem/rim | DIV/W+F | 76 | - | 200.-- | F | 0,47t/1-achsig |
| 548 | M | 515361 | Anh/rem/rim | Zbinden/Mag 6 KVA | 89 | 2 | 800.-- | F | Notstromgr/400/230 V/1-achsig |
| 549 | M+ | 60437 | Lastw/cam/autoc | Saurer/Berna-2DM/2VM | 70 | 6 | 800.-- | F | 4,9t |
| 550 | M+ | 62421 | Lastw/cam/autoc | Saurer/Berna-2DM/2VM | 68 | 6 | 800.-- | F | 4,9t |
| 551 | M+ | 28988 | Lastw/cam/autoc | Saurer/Berna-2DM/2VM | 71 | 6 | 1'000.-- | F | Flz Tankw 5300 Lt |
| 552 | M+ | 59049 | Lastw/cam/autoc | Saurer/Berna-2DM/2VM | 73 | 6 | 800.-- | F | 4,9t |
| 553 | M+ | 59126 | Lastw/cam/autoc | Saurer/Berna-2DM/2VM | 75 | 6 | 800.-- | F | 4,9t |
| 554 | M+ | 62404 | Lastw/cam/autoc | Saurer/Berna-2DM/2VM | 68 | 6 | 800.-- | F | 4,9t |
| 555 | M+ | 62265 | Lastw/cam/autoc | Saurer/Berna-2DM/2VM | 68 | 6 | 800.-- | F | 4,9t |
| 556 | M+ | 59394 | Lastw/cam/autoc | Saurer/Berna-2DM/2VM | 68 | 6 | 800.-- | F | 4,9t |
| 557 | M+ | 58910 | Lastw/cam/autoc | Saurer/Berna-2DM/2VM | 72 | 6 | 800.-- | F | 4,9t |
| 558 | M+ | 61443 | Lastw/cam/autoc | Saurer/Berna-2DM/2VM | 69 | 6 | 800.-- | F | 4,9t |
| 559 | M+ | 58922 | Lastw/cam/autoc | Saurer/Berna-2DM/2VM | 72 | 6 | 800.-- | F | 4,9t |
| 560 | M+ | 59304 | Lastw/cam/autoc | Saurer/Berna-2DM/2VM | 76 | 6 | 800.-- | F | 4,9t |
| 561 | M+ | 61531 | Lastw/cam/autoc | Saurer/Berna-2DM/2VM | 64 | 6 | 800.-- | F | 4,9t |
| 562 | M+ | 58844 | Lastw/cam/autoc | Saurer/Berna-2DM/2VM | 72 | 6 | 800.-- | F | 4,9t |
| 563 | M+ | 32110 | Lastw/cam/autoc | Steyr A 680 GL | 74 | 6 | 800.-- | F | 3,3t |
| 564 | M+ | 32093 | Lastw/cam/autoc | Steyr A 680 GL | 74 | 6 | 800.-- | F | 3,3t |
| 565 | M+ | 32119 | Lastw/cam/autoc | Steyr A 680 GL | 74 | 6 | 800.-- | F | 3,3t |
| 566 | M+ | 32100 | Lastw/cam/autoc | Steyr A 680 GL | 74 | 6 | 800.-- | F | 3,3t |
| 567 | M+ | 32088 | Lastw/cam/autoc | Steyr A 680 GL | 74 | 6 | 800.-- | F | 3,3t |
| 568 | M+ | 32102 | Lastw/cam/autoc | Steyr A 680 GL | 74 | 6 | 800.-- | F | 3,3t |
| 569 | M+ | 32111 | Lastw/cam/autoc | Steyr A 680 GL | 74 | 6 | 800.-- | F | 3,3t |
| 570 | M+ | 31737 | Lastw/cam/autoc | Steyr A 680 GL | 72 | 6 | 800.-- | F | 3,3t |
| 571 | M+ | 32098 | Lastw/cam/autoc | Steyr A 680 GL | 74 | 6 | 800.-- | F | 3,3t |
| 572 | M+ | 30632 | Lastw/cam/autoc | Steyr A 680 G | 71 | 6 | 500.-- | F | 3t |
| 573 | M+ | 30358 | Lastw/cam/autoc | Steyr A 680 G | 70 | 6 | 500.-- | F | 3t |
| 574 | M+ | 31736 | Lastw/cam/autoc | Steyr A 680 GL | 72 | 6 | 800.-- | F | 3,3t |
| 575 | M+ | 31740 | Lastw/cam/autoc | Steyr A 680 GL | 72 | 6 | 800.-- | F | 3,3t |
| 576 | M+ | 31056 | Lastw/cam/autoc | Steyr A 680 G | 71 | 6 | 500.-- | F | 3t |
| 577 | M | 820032 | Anh/rem/rim | Le Relais/K+W/Miller SG 400 | 73 | 4 | 800.-- | V | El/Schweissgr/1-achsig |
| 578 | M | 713005 | Anh/rem/rim | Genhard | 73 | - | 200.-- | F | Betrst/mat/anh/1-achsig/Kasten |
| 579 | M | 104003 | Anh/rem/rim | Sutter | 52 | - | 200.-- | F | 0,45t/1-achsig |
| 580 | M | 102801 | Anh/rem/rim | DIV/W+F | 67 | - | 200.-- | F | 0,47t/1-achsig |
| 581 | M | 104304 | Anh/rem/rim | Sutter | 52 | - | 200.-- | F | 0,45t/1-achsig |
| 582 | M | 104044 | Anh/rem/rim | Sutter | 52 | - | 200.-- | F | 0,45t/1-achsig |
| 583 | M | 800483 | Anh/rem/rim | DIV/MUELLER | 74 | - | 800.-- | V | 1-achsig/Motrd Rep Anh |
| 584 | GRD | 2258 | Anh/rem/rim | Ehsam | 40 | - | 100.-- | F | Schlauchanh./1-achsig |
| 585 | M | 102086 | Anh/rem/rim | DIV/W+F | 67 | - | 200.-- | F | 0,47t/1-achsig |
| 586 | M | 102597 | Anh/rem/rim | DIV/W+F | 67 | - | 200.-- | F | 0,47t/1-achsig |
| 587 | M | 800437 | Anh/rem/rim | DIV/MUELLER | 74 | - | 800.-- | V | 1-achsig/Motrd Rep Anh |
| 588 | M | 103157 | Anh/rem/rim | DIV/W+F | 76 | - | 200.-- | F | 0,47t/1-achsig |
| 589 | M | 820120 | Anh/rem/rim | Le Relais/K+W/Miller SG 400 | 73 | 4 | 800.-- | F | El/Schweissgr/1-achsig |
| 590 | M | 615235 | Anh/rem/rim | KLL 15 | 52 | 3 | 100.-- | K | Kompressor |
| 591 | M | 102077 | Anh/rem/rim | DIV/W+F | 66 | - | 200.-- | F | 0,47t/1-achsig |
| 592 | GRD | 1419 | Anh/rem/rim | Gerber Lausanne | 30 | - | 100.-- | F | Schlauchanh./1-achsig |
| 593 | M+ | 47406 | Arbeitskarren | Komatsu D 65 E | 78 | 6 | 15'000.-- | F | Bulldozer/Seilwinde |
| 594 | M | 151036 | Anh/rem/rim | DIV/SIG | 73 | - | 300.-- | F | 3,5t/2-achsig |
| 595 | M | 282930 | Anh/rem/rim | Frech-Hoch Sissach | 88 | - | 12'000.-- | V | Anh 85/Werkstatt / W 70285 |
| 596 | M | 210398 | Anh/rem/rim | Menzi/Sameco | 86 | - | 200.-- | F | 1t/1-achsig/mit Verdeck |
| 597 | M | 770465 | Anh/rem/rim | Sauter/Krapf | 88 | - | 4'000.-- | F | Desinfektions-Anh/2-achsig |

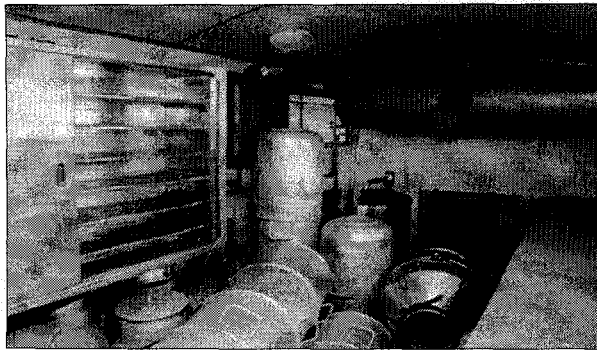
Mobile Bäckerei 68 - Boulangerie mobile



Nr. 466



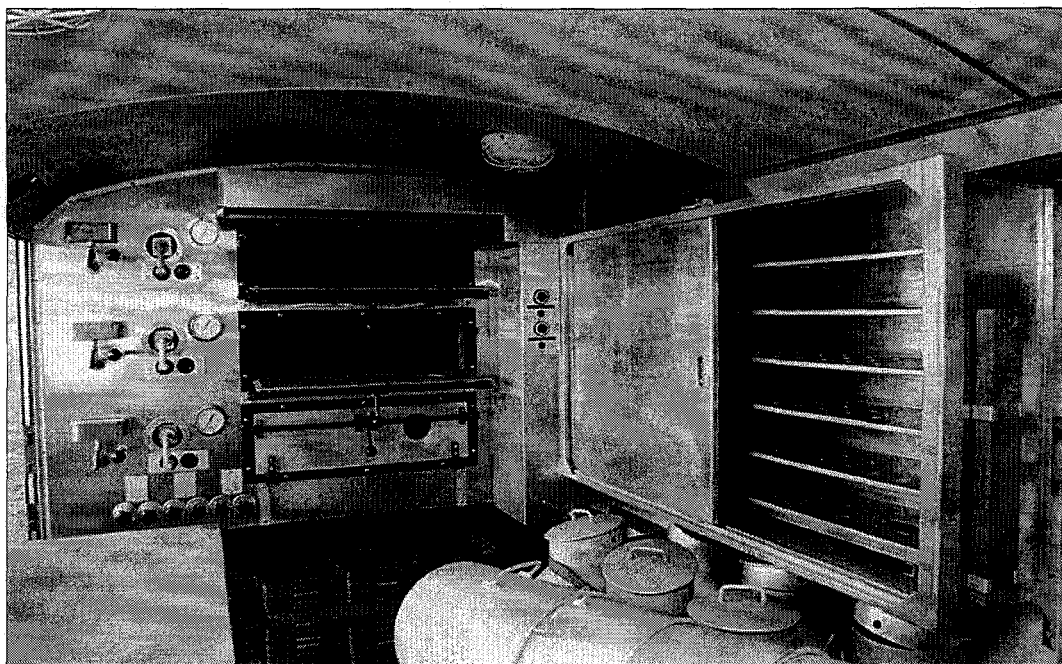
Notstromaggregat
génératrice de secours



Diverses Zubehör
accessoires divers



Knetmaschine
pétrin mécanique



Backstube mit 3 Oefen
fournil avec 3 fours

Platzversteigerung

Vente aux enchères sur place
 Beginn / commencement / incomincia alle ore 07.30 h

Vendita sul posto

| Nr. | Fz-Nr. | Fz-Art | Marke | Jg | Zyl. | Schätzung | Verkaufspreis | Fz-Zustand/Bemerkungen |
|-----|----------|----------------|---------------|-----------------------------|------|------------------|-------------------|---------------------------------|
| No | No-vhc. | Genre du vhc | Marque | Année | Cyl | Somme d'estimat. | Prix de vente | Etat du vhc/remarques |
| No | No-veic. | Genere di veic | Marca | anno | Cil | Stima | Prezzo di vendita | Stato di veic/osservazioni |
| 598 | M | 850947 | Anh/rem/rim | DIV/SIG | 75 | - | 500.-- | V 2-achsig/mit Verdeck |
| 599 | M | 829326 | Anh/rem/rim | Müller | 65 | - | 300.-- | V 1,5t/Kehrichtabfuhr/1-achsig |
| 600 | M | 282665 | Anh/rem/rim | Frech-Hoch Sissach | 88 | - | 12'000.-- | V Anh 85/Werkstatt / W 70289 |
| 601 | M | 210396 | Anh/rem/rim | Menzi/Sameco | 64 | - | 200.-- | F 1t/1-achsig/mit Verdeck |
| 602 | M | 210400 | Anh/rem/rim | Menzi/Sameco | 64 | - | 200.-- | F 1t/1-achsig/mit Verdeck |
| 603 | M | 210395 | Anh/rem/rim | Menzi/Sameco | 68 | - | 200.-- | F 1t/1-achsig/mit Verdeck |
| 604 | M | 152209 | Anh/rem/rim | DIV/SIG | 74 | - | 300.-- | F 3,5t/2-achsig |
| 605 | M | 282652 | Anh/rem/rim | Frech-Hoch Sissach | 88 | - | 12'000.-- | V Anh 85/Werkstatt / W 70288 |
| 606 | M | 230643 | Anh/rem/rim | Sameco RU 18-73 | 96 | - | 1'000.-- | F 14t/2-achsig/mit Verdeck |
| 607 | M | 104064 | Anh/rem/rim | Sutter | 52 | - | 200.-- | F 0,45t/1-achsig |
| 608 | M | 102000 | Anh/rem/rim | DIV/W+F | 66 | - | 200.-- | F 0,47t/1-achsig |
| 609 | M | 800502 | Anh/rem/rim | DIV/MUELLER | 74 | - | 800.-- | V 1-achsig/Motrd Rep Anh |
| 610 | M | 600830 | Anh/rem/rim | K+W | 48 | - | 200.-- | F Erkundungsanh/1-achsig |
| 611 | M | 820140 | Anh/rem/rim | Le Relais/K+W/Miller SG 400 | 73 | 4 | 800.-- | F El/Schweissgr/1-achsig |
| 612 | M | 102645 | Anh/rem/rim | DIV/W+F | 66 | - | 200.-- | F 0,47t/1-achsig |
| 613 | M | 713003 | Anh/rem/rim | Genhard | 74 | - | 200.-- | F Betrstm/anh/1-achsig/Kasten |
| 614 | M | 516380 | Anh/rem/rim | Frech-Hoch/VW/pil 22KVA | 76 | 4 | 1'000.-- | V Notstromgr/400/230 V/1-achsig |
| 615 | M | 800536 | Anh/rem/rim | DIV/MUELLER | 74 | - | 800.-- | V 1-achsig/Motrd Rep Anh |
| 616 | M | 102807 | Anh/rem/rim | DIV/W+F | 66 | - | 200.-- | F 0,47t/1-achsig |
| 617 | M | 820043 | Anh/rem/rim | Le Relais/K+W/Miller SG 400 | 73 | 4 | 800.-- | F El/Schweissgr/1-achsig |
| 618 | M | 102127 | Anh/rem/rim | DIV/W+F | 66 | - | 200.-- | F 0,47t/1-achsig |
| 619 | M | 820162 | Anh/rem/rim | Le Relais/K+W/Miller SG 400 | 73 | 4 | 800.-- | F El/Schweissgr/1-achsig |
| 620 | M | 104081 | Anh/rem/rim | Sutter | 52 | - | 200.-- | F 0,45t/1-achsig |
| 621 | M | 820041 | Anh/rem/rim | Le Relais/K+W/Miller SG 400 | 73 | 4 | 800.-- | F El/Schweissgr/1-achsig |
| 622 | M | 713038 | Anh/rem/rim | Genhard | 73 | - | 200.-- | F Betrstm/anh/1-achsig/Kasten |
| 623 | M | 600816 | Anh/rem/rim | K+W | 48 | - | 200.-- | F Erkundungsanh/1-achsig |
| 624 | M | 750373 | Arbeitskarren | Reber-Aebi | 66 | - | 200.-- | F 1-achsig/Messanlage mit Tank |
| 625 | M | 103261 | Anh/rem/rim | DIV/W+F | 82 | - | 200.-- | F 0,47t/1-achsig |
| 626 | M | 810023 | Anh/rem/rim | Merz/Willys/SG 52 | 52 | 4 | 1'000.-- | F El/Schweissgr/1-achsig |
| 627 | M | 800457 | Anh/rem/rim | DIV/MUELLER | 74 | - | 800.-- | V 1-achsig/Motrd Rep Anh |
| 628 | M | 515374 | Anh/rem/rim | Zbinden/Mag 6 KVA | 88 | 2 | 800.-- | F Notstromgr/400/230 V/1-achsig |
| 629 | M | 800513 | Anh/rem/rim | DIV/MUELLER | 74 | - | 800.-- | F 1-achsig/Motrd Rep Anh |
| 630 | M | 205005 | Anh/rem/rim | Baumann | 90 | - | 200.-- | V Betrstm/anh/1-achsig/Kasten |
| 631 | M | 104001 | Anh/rem/rim | Sutter | 52 | - | 200.-- | F 0,45t/1-achsig |
| 632 | M | 820160 | Anh/rem/rim | Le Relais/K+W/Miller SG 400 | 73 | 4 | 800.-- | F El/Schweissgr/1-achsig |
| 633 | M | 101754 | Anh/rem/rim | Peter/Meteolabor | 96 | - | 400.-- | F 1-achsig/Peilanh |
| 634 | M | 713006 | Anh/rem/rim | Genhard | 73 | - | 200.-- | F Betrstm/anh/1-achsig/Kasten |
| 635 | M | 800562 | Anh/rem/rim | DIV/MUELLER | 74 | - | 800.-- | V 1-achsig/Motrd Rep Anh |
| 636 | M | 800555 | Anh/rem/rim | DIV/MUELLER | 74 | - | 800.-- | V 1-achsig/Motrd Rep Anh |

Besten Dank für Ihren Besuch - wir freuen uns schon heute, Sie im nächsten Jahr wieder begrüßen zu dürfen.

Nous vous remercions de votre visite et nous nous réjouissons de vous accueillir de nouveau l'année prochaine.

Thank you for your visit - we're looking forward to see you again next year.